

APPENDIX D:

SCOTT COUNTY TRAFFIC MODEL UPDATE

To: Lisa Freese, Transportation Services Director
Craig Jensen, Transportation Planner
Scott County

From: Steve Wilson, Principal
Tim Babich, Associate
Krista Anderson, Engineer

Date: March 23, 2018

Subject: **Scott County Traffic Model Update: Year 2040 Forecasts**

Introduction

This memorandum describes the modeling process used to develop the Scott County Travel Demand Model (SCTDM). The SCTDM was developed to assist planning efforts at the County and local level for preparing and analyzing traffic impacts of potential land development and transportation scenarios. The primary applications for the model to be used by the County and local agencies include:

- Estimating future traffic volumes to identify capacity deficiencies and facility needs
- Estimating the effect of long-range land use decisions
- Supporting local comprehensive plan updates and traffic studies by providing the opportunity for a consistent method of estimating traffic volumes
- Supporting future land use and transportation project planning

The Scott County TDM was also developed to align with the Metropolitan Council's Activity Based Model (ABM) and Thrive MSP 2040 demographic forecasts. The SCTDM was refined to include sufficient detail to provide daily forecasts on County and local roadway segments. The structure of the SCTDM enables County staff to maintain existing and forecast future year input data records.

Assumptions

For input into the SCTDM, year 2014 and 2040 socioeconomic and roadway system assumptions were developed.

Socioeconomic Update

The year 2014 and 2040 socioeconomic assumptions are based on Metropolitan Council assumptions and forecasts. County staff and local agencies were involved in developing an updated Scott County Traffic Analysis Zone (TAZ) structure and assisted with the allocation of socioeconomic data.

Split TAZ Structure

The Scott County TAZ structure was developed using the Metropolitan Council TAZ structure. This base structure was then split into smaller TAZs, taking into consideration the following items to develop the Scott County TAZs:

- Existing municipal boundaries
- Existing and future roadway alignments were used when possible, while maintaining Metropolitan Council TAZ boundaries
- Travel shed delineations in local development areas
- Locations of published existing AADTs

The Scott County TAZ structure is depicted in Appendix A.

Socioeconomic Data Allocation

Official Metropolitan Council year 2014 and forecast year 2040 socioeconomic data was allocated to the Scott County TAZ structure for the existing and future scenarios. Socioeconomic data was systematically allocated using aerial imagery, land use assumptions, and feedback provided by local and County agencies.

Existing and future year municipal socioeconomic totals are depicted in Table 1. The Scott County socioeconomic data totals by TAZ are included in Appendix A.

Table 1: Existing and Year 2040 Municipal Totals

	Population		Households		Total Employment	
	2014	2040	2014	2040	2014	2040
Belle Plaine	6,584	12,170	2,373	4,840	1,558	3,240
Belle Plaine Township	898	960	306	380	37	100
Blakeley Township	442	390	166	170	51	100
Cedar Lake Township	3,028	3,590	976	1,400	226	320
Credit River Township	5,457	5,730	1,759	2,170	427	450
Elko New Market	4,443	10,760	1,350	4,000	375	1,170
Helena Township	1,803	1,640	577	690	164	280
Jackson Township	1,284	2,070	463	780	307	430
Jordan	6,130	8,840	2,072	3,520	1,367	2,540
Louisville Township	1,517	1,460	474	510	527	570
New Market Township	3,705	4,380	1,179	1,600	1,292	1,370
New Prague (Scott County Part)	4,352	7,090	1,648	3,110	1,943	3,270
Prior Lake	24,636	36,870	8,793	14,520	3,860	8,410
Sand Creek Township	1,655	1,790	558	730	337	560
Savage	29,476	40,900	9,724	14,300	6,915	9,400
Shakopee	39,188	59,350	13,451	21,520	18,481	32,800
Shakopee Mdewakanton Sioux	737	1,840	287	700	4,098	5,600
Spring Lake Township	3,566	4,850	1,227	1,890	570	380
St. Lawrence Township	568	1,380	177	530	138	150
Total	139,469	206,060	47,560	77,360	42,673	71,140

Roadway Network Update

Four roadway network scenarios were developed and are included in the SCTDM. Scott County staff identified and reviewed all 2014 and 2040 roadway assumptions. Roadway improvements are based on the Scott County Capital Improvement Plan (CIP) and MnDOT Statewide Transportation Improvement Program (STIP). The following scenarios are included in the SCTDM:

- 2014 Validation Scenario
 - Includes all roadway improvements prior to 2014
- 2040 Scenario 1: No Roadway Improvements
 - Includes capacity improvements from 2014 to 2017
- 2040 Scenario 2: Funded Roadway Improvements
 - Includes capacity improvements in CIP 2017-2026 and STIP 2017-2020
- 2040 Scenario 3: Potential Roadway Improvements for Study
 - Includes 2040 planned capacity improvements

Roadway improvements corresponding to each scenario are documented in Appendix B. The model roadway network was also updated with current MnDOT Average Annual Daily Traffic (AADT) data to facilitate the model validation process.

Model Development

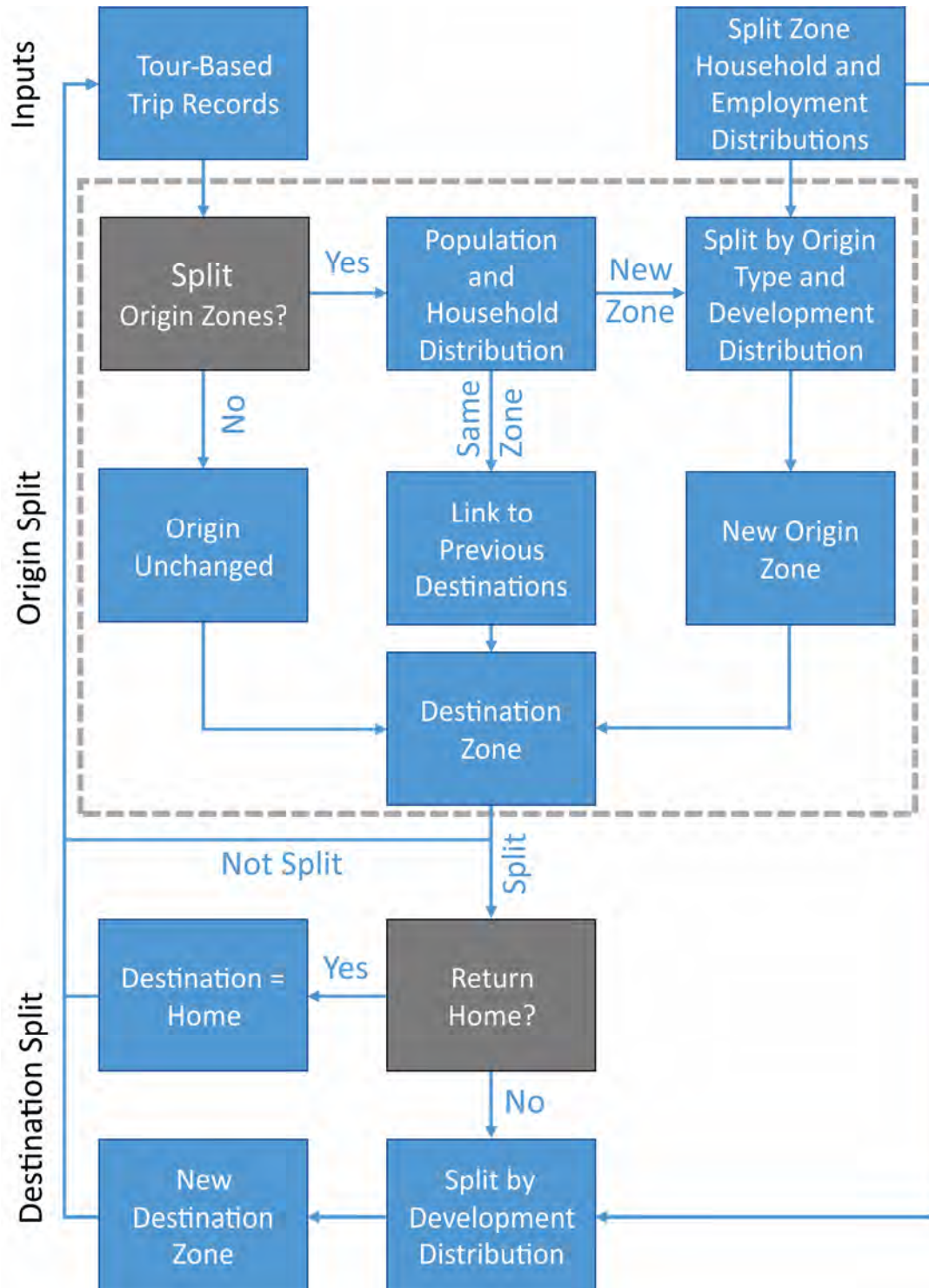
Validation

Daily traffic volumes were validated based on the degree to which the model replicates known ground counts. The validation process is described in the *Scott County Travel Demand Model Validation Technical Memorandum* dated October 3, 2017.

County Model Split Zone Process

The split zone assignment process used in the Scott County TDM is shown in Figure 1. This process was developed to refine outputs of the Metropolitan Council's ABM and to account for local development assumptions including Scott County TAZ and socioeconomic development allocation

Figure 1: Model Split Zone Process



Model Traffic Volume Adjustment Process

While the model was validated to existing counts, residual error may still be present in the future year model. To account for this discrepancy, forecast year volumes were adjusted on a link-by-link basis. This practice is consistent with the methods described in National Cooperative Highway Research Program (NCHRP) 765: Analytical Travel Forecasting Approaches for Project-Level Planning and Design.

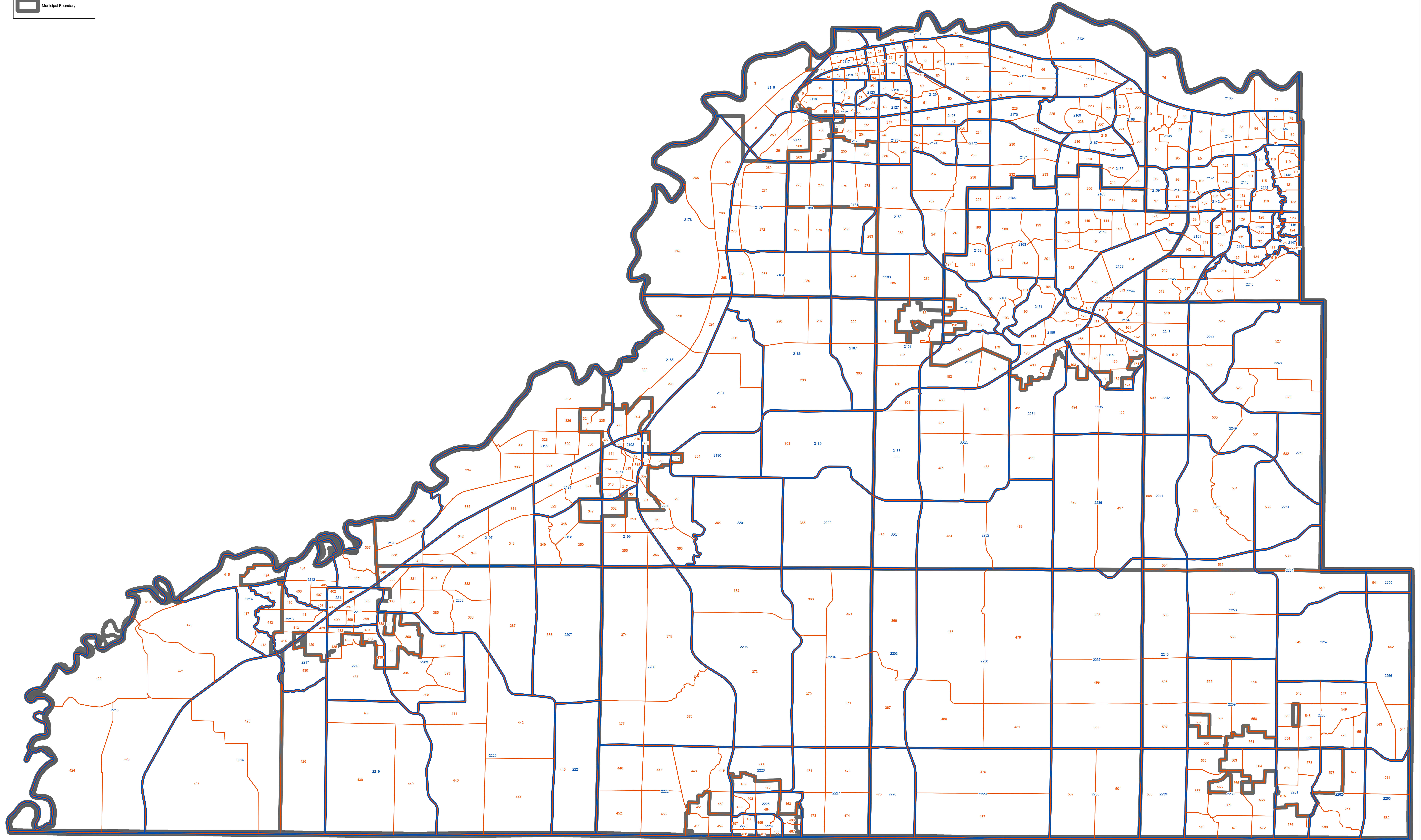
Year 2040 Daily Forecasts

Existing and year 2040 forecasts are included in Appendix C.

Appendix A

Legend

- XXXX Scott County TAZ Number
- XXXX Met Council TAZ Number
- Scott County TAZ Boundary
- Met Council TAZ Boundary
- Municipal Boundary



Q:\Projects\10374\GIS\ScottCo_TAZ_20180223.mxd

Scott County TAZ	Met Council TAZ	Existing Municipality	Year 2040 Municipality	Year 2014 Socioeconomic Data					Year 2040 Socioeconomic Data					Year 2014 to Year 2040 Growth				
				Households	Population	Retail Employment	Nonretail Employment	Total Employment	Households	Population	Retail Employment	Nonretail Employment	Total Employment	Households	Population	Retail Employment	Nonretail Employment	Total Employment
1	2116	Shakopee	Shakopee	96	218	65	1	66	132	326	214	51	265	36	108	149	50	199
2	2116	Shakopee	Shakopee	20	45	0	49	49	2	5	0	120	120	-18	-40	0	71	71
3	2116	Jackson Twp.	Jackson Twp.	3	7	0	19	19	8	20	0	19	19	5	13	0	0	0
4	2116	Jackson Twp.	Jackson Twp.	170	386	0	39	39	229	562	0	71	71	59	176	0	32	32
5	2116	Jackson Twp.	Jackson Twp.	1	2	34	27	61	1	2	34	27	61	0	0	0	0	0
6	2117	Shakopee	Shakopee	28	69	23	250	273	125	314	33	324	357	97	245	10	74	84
7	2117	Shakopee	Shakopee	32	79	2	250	252	32	80	2	324	326	0	1	0	74	74
8	2117	Shakopee	Shakopee	33	82	0	846	846	34	85	0	892	892	1	3	0	46	46
9	2117	Shakopee	Shakopee	113	280	0	11	11	130	326	0	16	16	17	46	0	5	5
10	2117	Shakopee	Shakopee	132	327	41	94	135	156	392	41	122	163	24	65	0	28	28
11	2118	Shakopee	Shakopee	135	345	0	12	12	134	335	0	16	16	-1	-10	0	4	4
12	2118	Shakopee	Shakopee	168	430	0	1	1	165	413	0	1	1	-3	-17	0	0	0
13	2118	Shakopee	Shakopee	0	0	0	248	248	0	0	0	297	297	0	0	0	49	49
14	2118	Shakopee	Shakopee	97	248	0	3	3	97	243	0	5	5	0	-5	0	2	2
15	2119	Shakopee	Shakopee	351	922	1	15	16	349	855	1	15	16	-2	-67	0	0	0
16	2119	Shakopee	Shakopee	0	0	92	127	219	120	294	92	152	244	120	294	0	25	25
17	2119	Shakopee	Shakopee	433	1,138	0	0	0	433	1,061	0	0	0	0	-77	0	0	0
18	2119	Jackson Twp.	Shakopee	53	139	0	9	9	56	137	0	9	9	3	-2	0	0	0
19	2119	Shakopee	Shakopee	71	187	0	0	0	74	181	0	0	0	3	-6	0	0	0
20	2120	Shakopee	Shakopee	0	0	31	80	111	0	0	31	90	121	0	0	0	10	10
21	2120	Shakopee	Shakopee	271	841	0	3	3	275	781	0	3	3	4	-60	0	0	0
22	2121	Shakopee	Shakopee	0	0	0	0	0	133	384	747	0	747	133	384	747	0	747
23	2121	Shakopee	Shakopee	150	457	0	2	2	150	434	0	2	2	0	-23	0	0	0
24	2122	Shakopee	Shakopee	115	378	0	1	1	125	354	0	4	4	10	-24	0	3	3
25	2122	Shakopee	Shakopee	175	575	0	0	0	185	524	0	0	0	10	-51	0	0	0
26	2123	Shakopee	Shakopee	0	0	0	53	53	0	0	0	80	80	0	0	0	27	27
27	2123	Shakopee	Shakopee	19	56	11	0	11	31	89	20	0	20	12	33	9	0	9
28	2124	Shakopee	Shakopee	79	204	15	50	65	131	334	36	78	114	52	130	21	28	49
29	2124	Shakopee	Shakopee	83	214	38	506	544	162	413	94	604	698	79	199	56	98	154
30	2124	Shakopee	Shakopee	79	204	0	0	0	83	212	0	0	0	4	8	0	0	0
31	2124	Shakopee	Shakopee	66	170	0	60	60	74	189	0	88	88	8	19	0	28	28
32	2124	Shakopee	Shakopee	71	183	0	0	0	74	189	0	0	0	3	6	0	0	0
33	2124	Shakopee	Shakopee	94	242	0	0	0	96	245	0	0	0	2	3	0	0	0
34	2124	Shakopee	Shakopee	47	121	0	1	1	49	125	0	1	1	2	4	0	0	0
35	2125	Shakopee	Shakopee	144	383	66	186	252	167	428	116	217	333	23	45	50	31	81
36	2125	Shakopee	Shakopee	173	460	0	3	3	181	463	0	8	8	8	3	0	5	5
37	2125	Shakopee	Shakopee	194	516	24	274	298	194	497	32	323	355	0	-19	8	49	57
38	2125	Shakopee	Shakopee	182	484	0	70	70	180	461	0	108	108	-2	-23	0	38	38
39	2125	Shakopee	Shakopee	220	585	9	53	62	313	801	12	67	79	93	216	3	14	17
40	2126	Shakopee	Shakopee	161	518	0	6	6	171	489	0	6	6	10	-29	0	0	0
41	2126	Shakopee	Shakopee	175	563	0	10	10	185	529	0	10	10	10	-34	0	0	0
42	2126	Shakopee	Shakopee	73	235	131	30	161	73	209	130	37	167	0	-26	-1	7	6
43	2127	Shakopee	Shakopee	288	935	4	0	4	292	826	4	0	4	4	-109	0	0	0
44	2127	Shakopee	Shakopee	0	0	263	150	413	0	0	262	179	441	0	0	-1	29	28

Scott County TAZ	Met Council TAZ	Existing Municipality	Year 2040 Municipality	Year 2014 Socioeconomic Data					Year 2040 Socioeconomic Data					Year 2014 to Year 2040 Growth				
				Households	Population	Retail Employment	Nonretail Employment	Total Employment	Households	Population	Retail Employment	Nonretail Employment	Total Employment	Households	Population	Retail Employment	Nonretail Employment	Total Employment
45	2128	Shakopee	Shakopee	15	38	40	10	50	218	658	239	60	299	203	620	199	50	249
46	2128	Shakopee	Shakopee	100	255	0	0	0	600	1,812	0	0	0	500	1,557	0	0	0
47	2128	Shakopee	Shakopee	537	1,368	232	33	265	684	2,066	281	83	364	147	698	49	50	99
48	2129	Shakopee	Shakopee	176	480	10	10	20	219	576	10	20	30	43	96	0	10	10
49	2129	Shakopee	Shakopee	378	1,032	5	219	224	375	986	5	249	254	-3	-46	0	30	30
50	2129	Shakopee	Shakopee	248	677	0	30	30	312	821	0	35	35	64	144	0	5	5
51	2129	Shakopee	Shakopee	276	753	43	76	119	249	655	43	119	162	-27	-98	0	43	43
52	2130	Shakopee	Shakopee	0	0	0	280	280	0	0	0	2,261	2,261	0	0	0	1,981	1,981
53	2130	Shakopee	Shakopee	0	0	0	150	150	0	0	0	869	869	0	0	0	719	719
54	2130	Shakopee	Shakopee	59	139	100	30	130	79	196	100	30	130	20	57	0	0	0
55	2130	Shakopee	Shakopee	0	0	29	935	964	0	0	29	1,429	1,458	0	0	0	494	494
56	2130	Shakopee	Shakopee	201	473	8	0	8	246	610	8	15	23	45	137	0	15	15
57	2130	Shakopee	Shakopee	120	282	6	2	8	187	464	6	2	8	67	182	0	0	0
58	2130	Shakopee	Shakopee	327	770	100	0	100	392	972	100	0	100	65	202	0	0	0
59	2130	Shakopee	Shakopee	500	1,177	21	228	249	499	1,238	31	269	300	-1	61	10	41	51
60	2130	Shakopee	Shakopee	2	5	363	150	513	853	2,115	561	647	1,208	851	2,110	198	497	695
61	2130	Shakopee	Shakopee	0	0	29	1,000	1,029	0	0	128	1,096	1,224	0	0	99	96	195
62	2131	Shakopee	Shakopee	0	0	0	21	21	0	0	0	42	42	0	0	0	21	21
63	2131	Shakopee	Shakopee	173	349	123	285	408	261	621	178	344	522	88	272	55	59	114
64	2132	Shakopee	Shakopee	0	0	221	443	664	0	0	221	611	832	0	0	0	168	168
65	2132	Shakopee	Shakopee	0	0	1	1,047	1,048	0	0	2	1,442	1,444	0	0	1	395	396
66	2132	Shakopee	Shakopee	0	0	16	325	341	0	0	26	1,170	1,196	0	0	10	845	855
67	2132	Shakopee	Shakopee	0	0	15	1,349	1,364	0	0	24	1,858	1,882	0	0	9	509	518
68	2132	Shakopee	Shakopee	0	0	0	693	693	0	0	0	810	810	0	0	0	117	117
69	2132	Shakopee	Shakopee	0	0	49	77	126	0	0	248	276	524	0	0	199	199	398
70	2133	Shakopee	Shakopee	0	0	0	297	297	0	0	0	545	545	0	0	0	248	248
71	2133	Shakopee	Shakopee	0	0	0	150	150	0	0	0	299	299	0	0	0	149	149
72	2133	Shakopee	Shakopee	0	0	0	20	20	0	0	1	41	42	0	0	1	21	22
73	2134	Shakopee	Shakopee	0	0	4	781	785	1	1	79	798	877	1	1	75	17	92
74	2134	Shakopee	Shakopee	0	0	0	10	10	0	0	0	27	27	0	0	0	17	17
75	2135	Savage	Savage	0	0	10	105	115	0	0	10	351	361	0	0	0	246	246
76	2135	Savage	Savage	0	0	0	128	128	0	0	0	342	342	0	0	0	214	214
77	2136	Savage	Savage	180	438	102	20	122	210	532	102	30	132	30	94	0	10	10
78	2136	Savage	Savage	319	777	50	32	82	390	988	50	48	98	71	211	0	16	16
79	2136	Savage	Savage	129	314	0	227	227	170	431	0	333	333	41	117	0	106	106
80	2136	Savage	Savage	153	373	0	0	0	230	583	0	0	0	77	210	0	0	0
81	2136	Savage	Savage	117	285	2	0	2	190	482	2	0	2	73	197	0	0	0
82	2137	Savage	Savage	0	0	0	175	175	0	0	0	175	175	0	0	0	0	0
83	2137	Savage	Savage	0	0	0	436	436	0	0	0	436	436	0	0	0	0	0
84	2137	Savage	Savage	0	0	0	179	179	0	0	0	179	179	0	0	0	0	0
85	2137	Savage	Savage	0	0	0	199	199	1	3	0	199	199	1	3	0	0	0
86	2137	Savage	Savage	4	13	52	372	424	20	50	210	372	582	16	37	158	0	158
87	2137	Savage	Savage	104	330	0	117	117	130	328	0	117	117	26	-2	0	0	0
88	2137	Savage	Savage	3	10	0	0	0	120	303	0	39	39	117	293	0	39	39

Scott County TAZ	Met Council TAZ	Existing Municipality	Year 2040 Municipality	Year 2014 Socioeconomic Data					Year 2040 Socioeconomic Data					Year 2014 to Year 2040 Growth				
				Households	Population	Retail Employment	Nonretail Employment	Total Employment	Households	Population	Retail Employment	Nonretail Employment	Total Employment	Households	Population	Retail Employment	Nonretail Employment	Total Employment
89	2137	Savage	Savage	126	400	0	0	0	260	656	0	0	0	134	256	0	0	0
90	2138	Savage	Savage	17	51	81	171	252	20	62	138	195	333	3	11	57	24	81
91	2138	Savage	Savage	197	588	0	0	0	200	616	0	0	0	3	28	0	0	0
92	2138	Savage	Savage	0	0	36	246	282	0	0	61	280	341	0	0	25	34	59
93	2138	Savage	Savage	0	0	4	646	650	0	0	7	734	741	0	0	3	88	91
94	2138	Savage	Savage	342	1,020	0	14	14	350	1,078	0	16	16	8	58	0	2	2
95	2138	Savage	Savage	139	415	2	11	13	210	647	3	13	16	71	232	1	2	3
96	2139	Savage	Savage	252	954	0	0	0	290	888	0	0	0	38	-66	0	0	0
97	2139	Savage	Savage	207	783	4	89	93	250	765	19	89	108	43	-18	15	0	15
98	2140	Savage	Savage	241	893	0	0	0	245	752	0	0	0	4	-141	0	0	0
99	2140	Savage	Savage	125	463	0	0	0	130	399	0	0	0	5	-64	0	0	0
100	2140	Savage	Savage	57	211	273	226	499	95	292	293	246	539	38	81	20	20	40
101	2141	Savage	Savage	2	6	0	0	0	200	572	0	0	0	198	566	0	0	0
102	2141	Savage	Savage	174	537	0	1	1	205	587	0	1	1	31	50	0	0	0
103	2141	Savage	Savage	0	0	0	81	81	50	143	0	112	112	50	143	0	31	31
104	2141	Savage	Savage	87	268	20	13	33	90	258	50	18	68	3	-10	30	5	35
105	2142	Savage	Savage	68	177	0	236	236	195	566	0	426	426	127	389	0	190	190
106	2142	Savage	Savage	119	309	0	0	0	175	508	0	0	0	56	199	0	0	0
107	2142	Savage	Savage	85	221	0	0	0	125	363	0	0	0	40	142	0	0	0
108	2142	Savage	Savage	2	5	58	30	88	310	900	71	54	125	308	895	13	24	37
109	2142	Savage	Savage	29	75	88	6	94	70	203	109	11	120	41	128	21	5	26
110	2143	Savage	Savage	315	962	0	0	0	330	948	3	0	3	15	-14	3	0	3
111	2143	Savage	Savage	259	791	0	68	68	290	833	0	77	77	31	42	0	9	9
112	2143	Savage	Savage	137	418	0	0	0	160	460	0	0	0	23	42	0	0	0
113	2143	Savage	Savage	81	247	0	0	0	85	244	636	0	636	4	-3	636	0	636
114	2144	Savage	Savage	97	285	0	0	0	125	383	0	0	0	28	98	0	0	0
115	2144	Savage	Savage	126	371	0	0	0	145	444	0	0	0	19	73	0	0	0
116	2144	Savage	Savage	297	874	23	27	50	315	964	23	42	65	18	90	0	15	15
117	2145	Savage	Savage	140	453	0	4	4	145	445	0	4	4	5	-8	0	0	0
118	2145	Savage	Savage	99	320	0	17	17	120	369	0	18	18	21	49	0	1	1
119	2145	Savage	Savage	253	819	0	0	0	260	798	0	0	0	7	-21	0	0	0
120	2145	Savage	Savage	132	427	0	0	0	135	415	0	0	0	3	-12	0	0	0
121	2145	Savage	Savage	390	1,262	0	2	2	400	1,228	0	2	2	10	-34	0	0	0
122	2145	Savage	Savage	234	757	69	210	279	245	752	100	225	325	11	-5	31	15	46
123	2146	Savage	Savage	44	143	70	272	342	70	214	140	272	412	26	71	70	0	70
124	2146	Savage	Savage	148	482	0	12	12	155	473	0	12	12	7	-9	0	0	0
125	2147	Savage	Savage	167	542	3	1	4	170	510	3	3	6	3	-32	0	2	2
126	2147	Savage	Savage	101	328	3	1	4	140	420	3	3	6	39	92	0	2	2
127	2147	Savage	Savage	81	263	3	1	4	100	300	3	3	6	19	37	0	2	2
128	2148	Savage	Savage	181	615	23	48	71	200	604	33	48	81	19	-11	10	0	10
129	2148	Savage	Savage	99	337	45	135	180	120	363	67	135	202	21	26	22	0	22
130	2148	Savage	Savage	190	646	0	0	0	210	634	0	0	0	20	-12	0	0	0
131	2149	Savage	Savage	215	757	0	23	23	225	675	0	23	23	10	-82	0	0	0
132	2148	Savage	Savage	170	578	0	0	0	190	574	0	0	0	20	-4	0	0	0

Scott County TAZ	Met Council TAZ	Existing Municipality	Year 2040 Municipality	Year 2014 Socioeconomic Data					Year 2040 Socioeconomic Data					Year 2014 to Year 2040 Growth				
				Households	Population	Retail Employment	Nonretail Employment	Total Employment	Households	Population	Retail Employment	Nonretail Employment	Total Employment	Households	Population	Retail Employment	Nonretail Employment	Total Employment
133	2149	Savage	Savage	147	518	3	23	26	150	450	3	23	26	3	-68	0	0	0
134	2149	Savage	Savage	155	546	0	0	0	200	600	0	0	0	45	54	0	0	0
135	2149	Savage	Savage	201	708	0	0	0	270	810	0	0	0	69	102	0	0	0
136	2150	Savage	Savage	197	478	29	34	63	270	810	29	41	70	73	332	0	7	7
137	2150	Savage	Savage	168	407	0	0	0	180	540	0	0	0	12	133	0	0	0
138	2150	Savage	Savage	111	269	11	17	28	130	390	11	21	32	19	121	0	4	4
139	2151	Savage	Savage	0	0	222	244	466	35	90	250	259	509	35	90	28	15	43
140	2151	Savage	Savage	262	617	15	297	312	390	1,004	15	315	330	128	387	0	18	18
141	2151	Savage	Savage	380	895	44	15	59	410	1,055	44	15	59	30	160	0	0	0
142	2151	Savage	Savage	325	765	18	76	94	405	1,042	18	81	99	80	277	0	5	5
143	2152	Prior Lake	Prior Lake	100	303	0	0	0	110	300	0	0	0	10	-3	0	0	0
144	2152	Prior Lake	Prior Lake	2	6	0	0	0	209	569	0	0	0	207	563	0	0	0
145	2152	Prior Lake	Prior Lake	171	519	0	368	368	181	493	0	368	368	10	-26	0	0	0
146	2152	Prior Lake	Prior Lake	68	206	44	2	46	268	730	52	3	55	200	524	8	1	9
147	2152	Prior Lake	Prior Lake	191	579	116	38	154	191	520	135	47	182	0	-59	19	9	28
148	2152	Prior Lake	Prior Lake	221	670	0	33	33	221	602	0	41	41	0	-68	0	8	8
149	2152	Prior Lake	Prior Lake	211	640	0	5	5	211	575	0	6	6	0	-65	0	1	1
150	2152	Prior Lake	Prior Lake	203	616	0	0	0	207	564	0	0	0	4	-52	0	0	0
151	2152	Prior Lake	Prior Lake	92	279	0	0	0	342	931	0	0	0	250	652	0	0	0
152	2152	Prior Lake	Prior Lake	306	928	0	0	0	320	871	0	0	0	14	-57	0	0	0
153	2153	Prior Lake	Prior Lake	116	307	0	0	0	116	273	0	0	0	0	-34	0	0	0
154	2153	Prior Lake	Prior Lake	502	1,329	6	3	9	503	1,185	14	7	21	1	-144	8	4	12
155	2153	Prior Lake	Prior Lake	155	410	5	0	5	170	400	12	0	12	15	-10	7	0	7
156	2153	Prior Lake	Prior Lake	87	230	0	0	0	107	252	0	0	0	20	22	0	0	0
157	2153	Prior Lake	Prior Lake	84	222	33	262	295	84	198	72	600	672	0	-24	39	338	377
158	2154	Prior Lake	Prior Lake	100	316	6	48	54	110	267	6	61	67	10	-49	0	13	13
159	2154	Prior Lake	Prior Lake	305	962	1	64	65	307	744	1	81	82	2	-218	0	17	17
160	2154	Prior Lake	Prior Lake	162	511	0	1	1	172	417	0	1	1	10	-94	0	0	0
161	2154	Prior Lake	Prior Lake	8	25	0	0	0	106	257	0	0	0	98	232	0	0	0
162	2154	Prior Lake	Prior Lake	0	0	11	124	135	0	0	11	300	311	0	0	0	176	176
163	2155	Prior Lake	Prior Lake	241	614	22	0	22	241	577	22	0	22	0	-37	0	0	0
164	2155	Prior Lake	Prior Lake	301	767	0	46	46	301	721	0	97	97	0	-46	0	51	51
165	2155	Prior Lake	Prior Lake	350	891	183	180	363	350	838	275	500	775	0	-53	92	320	412
166	2155	Prior Lake	Prior Lake	0	0	51	213	264	0	0	51	442	493	0	0	0	229	229
167	2155	Prior Lake	Prior Lake	0	0	34	259	293	0	0	80	675	755	0	0	46	416	462
168	2155	Prior Lake	Prior Lake	175	446	0	0	0	175	419	0	0	0	0	-27	0	0	0
169	2155	Prior Lake	Prior Lake	574	1,462	0	0	0	699	1,674	0	0	0	125	212	0	0	0
170	2155	Prior Lake	Prior Lake	1	3	0	0	0	77	184	0	0	0	76	181	0	0	0
171	2155	Spring Lake Twp.	Spring Lake Twp.	4	10	0	0	0	10	24	0	0	0	6	14	0	0	0
172	2155	Prior Lake	Prior Lake	62	158	0	0	0	112	268	0	0	0	50	110	0	0	0
173	2155	Spring Lake Twp.	Spring Lake Twp.	8	20	0	0	0	13	31	0	0	0	5	11	0	0	0
174	2155	Spring Lake Twp.	Spring Lake Twp.	4	10	0	0	0	134	321	0	0	0	130	311	0	0	0
175	2156	Prior Lake	Prior Lake	215	576	0	113	113	235	530	0	590	590	20	-46	0	477	477
176	2156	Prior Lake	Prior Lake	44	118	60	1	61	94	212	222	201	423	50	94	162	200	362

Scott County TAZ	Met Council TAZ	Existing Municipality	Year 2040 Municipality	Year 2014 Socioeconomic Data					Year 2040 Socioeconomic Data					Year 2014 to Year 2040 Growth				
				Households	Population	Retail Employment	Nonretail Employment	Total Employment	Households	Population	Retail Employment	Nonretail Employment	Total Employment	Households	Population	Retail Employment	Nonretail Employment	Total Employment
177	2156	Prior Lake	Prior Lake	433	1,160	108	364	472	463	1,045	205	554	759	30	-115	97	190	287
178	2156	Prior Lake	Prior Lake	243	651	0	0	0	252	569	0	195	195	9	-82	0	195	195
179	2157	Prior Lake	Prior Lake	77	202	0	0	0	78	202	5	0	5	1	0	5	0	5
180	2157	Prior Lake	Prior Lake	30	79	0	0	0	280	726	5	0	5	250	647	5	0	5
181	2157	Spring Lake Twp.	Spring Lake Twp.	63	166	0	0	0	73	189	0	0	0	10	23	0	0	0
182	2157	Spring Lake Twp.	Prior Lake	91	239	0	71	71	162	420	0	71	71	71	181	0	0	0
183	2158	Prior Lake	Prior Lake	9	25	0	0	0	854	2,249	0	0	0	845	2,224	0	0	0
184	2158	Spring Lake Twp.	Prior Lake	5	14	0	0	0	305	803	0	0	0	300	789	0	0	0
185	2158	Spring Lake Twp.	Prior Lake	19	53	0	0	0	419	1,104	0	0	0	400	1,051	0	0	0
186	2158	Spring Lake Twp.	Prior Lake	8	22	0	167	167	14	37	10	268	278	6	15	10	101	111
187	2159	Prior Lake	Prior Lake	11	39	0	0	0	82	215	0	0	0	71	176	0	0	0
188	2159	Spring Lake Twp.	Spring Lake Twp.	5	18	0	0	0	11	29	0	0	0	6	11	0	0	0
189	2159	Prior Lake	Prior Lake	123	437	17	18	35	223	585	17	40	57	100	148	0	22	22
190	2159	Spring Lake Twp.	Spring Lake Twp.	21	75	0	0	0	29	76	0	0	0	8	1	0	0	0
191	2160	Prior Lake	Prior Lake	201	557	0	8	8	226	595	0	40	40	25	38	0	32	32
192	2160	Prior Lake	Prior Lake	7	19	0	0	0	127	334	10	0	10	120	315	10	0	10
193	2160	Prior Lake	Prior Lake	136	377	0	0	0	136	358	0	0	0	0	-19	0	0	0
194	2161	Prior Lake	Prior Lake	97	250	0	17	17	97	261	0	70	70	0	11	0	53	53
195	2161	Prior Lake	Prior Lake	192	495	0	0	0	207	558	0	52	52	15	63	0	52	52
196	2162	Prior Lake	Prior Lake	99	313	0	0	0	99	243	0	0	0	0	-70	0	0	0
196	2162	SMSC	SMSC	59	184	389	746	1,135	139	341	489	956	1,445	80	157	100	210	310
197	2162	SMSC	SMSC	8	25	0	0	0	38	93	30	10	40	30	68	30	10	40
198	2162	SMSC	SMSC	0	0	2,472	353	2,825	0	0	3,532	503	4,035	0	0	1,060	150	1,210
199	2163	Prior Lake	Prior Lake	199	582	0	30	30	438	1,167	0	30	30	239	585	0	0	0
200	2163	Prior Lake	Prior Lake	243	710	11	0	11	243	647	11	0	11	0	-63	0	0	0
201	2163	Prior Lake	Prior Lake	339	991	0	101	101	344	916	0	101	101	5	-75	0	0	0
202	2163	Prior Lake	Prior Lake	45	131	0	0	0	50	133	0	0	0	5	2	0	0	0
202	2163	SMSC	SMSC	110	317	14	124	138	110	293	10	70	80	0	-24	-4	-54	-58
203	2163	Prior Lake	Prior Lake	419	1,224	0	0	0	425	1,132	0	0	0	6	-92	0	0	0
204	2164	Prior Lake	Prior Lake	27	53	3	390	393	37	100	0	150	150	10	47	-3	-240	-243
204	2164	SMSC	SMSC	110	211	0	0	0	193	520	0	0	0	83	309	0	0	0
205	2164	Prior Lake	Prior Lake	4	8	0	0	0	67	180	1	187	188	63	172	1	187	188
206	2165	Prior Lake	Prior Lake	35	104	0	0	0	598	1,533	50	167	217	563	1,429	50	167	217
207	2165	Prior Lake	Prior Lake	9	27	0	0	0	180	462	50	167	217	171	435	50	167	217
208	2165	Prior Lake	Prior Lake	1	3	0	0	0	367	941	0	0	0	366	938	0	0	0
209	2165	Prior Lake	Prior Lake	26	78	0	0	0	355	910	0	0	0	329	832	0	0	0
210	2166	Shakopee	Shakopee	15	51	0	0	0	102	294	0	0	0	87	243	0	0	0
211	2166	Shakopee	Shakopee	3	10	0	49	49	3	9	0	49	49	0	-1	0	0	0
212	2166	Shakopee	Shakopee	68	230	0	11	11	128	369	0	11	11	60	139	0	0	0
213	2166	Shakopee	Shakopee	135	457	0	0	0	134	386	0	0	0	-1	-71	0	0	0
214	2166	Shakopee	Shakopee	7	24	0	0	0	112	323	0	0	0	105	299	0	0	0
215	2167	Shakopee	Shakopee	217	806	0	34	34	262	755	71	74	145	45	-51	71	40	111
216	2167	Shakopee	Shakopee	54	201	0	0	0	134	386	0	0	0	80	185	0	0	0
217	2167	Shakopee	Shakopee	120	446	0	0	0	143	412	1	0	1	23	-34	1	0	1

Scott County TAZ	Met Council TAZ	Existing Municipality	Year 2040 Municipality	Year 2014 Socioeconomic Data					Year 2040 Socioeconomic Data					Year 2014 to Year 2040 Growth				
				Households	Population	Retail Employment	Nonretail Employment	Total Employment	Households	Population	Retail Employment	Nonretail Employment	Total Employment	Households	Population	Retail Employment	Nonretail Employment	Total Employment
218	2168	Shakopee	Shakopee	0	0	0	64	64	0	0	0	213	213	0	0	0	149	149
219	2168	Shakopee	Shakopee	0	0	0	4	4	0	0	100	203	303	0	0	100	199	299
220	2168	Shakopee	Shakopee	8	23	11	564	575	311	911	11	761	772	303	888	0	197	197
221	2168	Shakopee	Shakopee	182	523	42	12	54	235	689	415	62	477	53	166	373	50	423
222	2168	Shakopee	Shakopee	70	201	0	33	33	83	243	0	33	33	13	42	0	0	0
223	2169	Shakopee	Shakopee	291	951	0	0	0	300	873	0	0	0	9	-78	0	0	0
224	2169	Shakopee	Shakopee	0	0	545	304	849	0	0	692	382	1,074	0	0	147	78	225
225	2169	Shakopee	Shakopee	264	863	0	0	0	272	792	0	0	0	8	-71	0	0	0
226	2169	Shakopee	Shakopee	270	882	0	15	15	279	812	0	15	15	9	-70	0	0	0
227	2169	Shakopee	Shakopee	114	372	8	68	76	114	332	28	78	106	0	-40	20	10	30
228	2170	Shakopee	Shakopee	295	961	71	238	309	295	867	170	1,133	1,303	0	-94	99	895	994
229	2170	Shakopee	Shakopee	40	130	0	0	0	39	115	0	0	0	-1	-15	0	0	0
230	2171	Shakopee	Shakopee	87	159	0	1	1	156	424	0	41	41	69	265	0	40	40
230	2171	SMSC	SMSC	0	0	0	0	0	160	433	0	0	0	160	433	0	0	0
231	2171	Shakopee	Shakopee	0	0	0	0	0	152	413	0	0	0	152	413	0	0	0
232	2171	Shakopee	Shakopee	2	4	0	0	0	1	3	0	0	0	-1	-1	0	0	0
233	2171	Shakopee	Shakopee	50	91	0	0	0	67	182	0	0	0	17	91	0	0	0
234	2172	Shakopee	Shakopee	2	7	1	25	26	323	975	200	124	324	321	968	199	99	298
235	2172	Shakopee	Shakopee	233	827	0	25	25	233	704	0	25	25	0	-123	0	0	0
236	2172	Shakopee	Shakopee	460	1,634	0	0	0	560	1,691	0	0	0	100	57	0	0	0
237	2173	Shakopee	Shakopee	91	267	0	1	1	439	1,330	0	2	2	348	1,063	0	1	1
238	2173	Shakopee	Shakopee	2	6	0	0	0	421	1,276	0	0	0	419	1,270	0	0	0
239	2173	Shakopee	Shakopee	15	44	0	6	6	223	676	0	8	8	208	632	0	2	2
240	2173	Shakopee	Shakopee	25	73	0	51	51	41	124	0	72	72	16	51	0	21	21
241	2173	Shakopee	Shakopee	25	73	0	0	0	28	85	0	0	0	3	12	0	0	0
242	2174	Shakopee	Shakopee	243	900	0	186	186	243	727	0	235	235	0	-173	0	49	49
243	2174	Shakopee	Shakopee	0	0	3	1,108	1,111	0	0	202	1,347	1,549	0	0	199	239	438
244	2174	Shakopee	Shakopee	0	0	0	0	0	150	449	0	0	0	150	449	0	0	0
245	2174	Shakopee	Shakopee	531	1,967	0	100	100	587	1,755	0	100	100	56	-212	0	0	0
246	2175	Shakopee	Shakopee	0	0	120	50	170	0	0	169	50	219	0	0	49	0	49
247	2175	Shakopee	Shakopee	477	1,345	0	0	0	491	1,365	0	0	0	14	20	0	0	0
248	2175	Shakopee	Shakopee	430	1,213	0	85	85	591	1,643	0	90	90	161	430	0	5	5
249	2175	Shakopee	Shakopee	157	443	0	0	0	270	751	0	0	0	113	308	0	0	0
250	2175	Shakopee	Shakopee	44	124	0	0	0	55	153	0	0	0	11	29	0	0	0
251	2176	Shakopee	Shakopee	237	774	0	0	0	233	652	0	0	0	-4	-122	0	0	0
252	2176	Shakopee	Shakopee	1	3	0	50	50	1	3	100	87	187	0	0	100	37	137
253	2176	Shakopee	Shakopee	203	663	0	0	0	199	557	0	0	0	-4	-106	0	0	0
254	2176	Shakopee	Shakopee	0	0	0	112	112	0	0	0	219	219	0	0	0	107	107
255	2176	Jackson Twp.	Jackson Twp.	20	65	13	12	25	27	75	13	12	25	7	10	0	0	0
256	2176	Jackson Twp.	Jackson Twp.	57	186	13	18	31	67	186	13	18	31	10	0	0	0	0
257	2177	Jackson Twp.	Shakopee	1	3	0	0	0	161	438	0	990	990	160	435	0	990	990
258	2177	Shakopee	Shakopee	3	9	0	0	0	964	2,622	149	25	174	961	2,613	149	25	174
259	2177	Jackson Twp.	Jackson Twp.	72	219	0	57	57	72	195	0	130	130	0	-24	0	73	73
260	2177	Jackson Twp.	Shakopee	3	9	0	0	0	303	824	0	0	0	300	815	0	0	0

Scott County TAZ	Met Council TAZ	Existing Municipality	Year 2040 Municipality	Year 2014 Socioeconomic Data					Year 2040 Socioeconomic Data					Year 2014 to Year 2040 Growth				
				Households	Population	Retail Employment	Nonretail Employment	Total Employment	Households	Population	Retail Employment	Nonretail Employment	Total Employment	Households	Population	Retail Employment	Nonretail Employment	Total Employment
261	2177	Jackson Twp.	Jackson Twp.	9	27	0	0	0	289	781	0	30	30	280	754	0	30	30
262	2177	Jackson Twp.	Shakopee	0	0	0	10	10	360	979	0	20	20	360	979	0	10	10
263	2177	Shakopee	Shakopee	0	0	0	0	0	242	658	0	0	0	242	658	0	0	0
264	2178	Louisville Twp.	Louisville Twp.	58	205	18	152	170	63	215	20	153	173	5	10	2	1	3
265	2178	Louisville Twp.	Louisville Twp.	2	7	0	20	20	2	7	0	20	20	0	0	0	0	0
266	2178	Louisville Twp.	Louisville Twp.	0	0	0	16	16	0	0	0	16	16	0	0	0	0	0
267	2178	Louisville Twp.	Louisville Twp.	1	4	0	0	0	1	3	0	0	0	0	-1	0	0	0
268	2178	Louisville Twp.	Louisville Twp.	2	7	0	1	1	2	7	0	1	1	0	0	0	0	0
269	2179	Louisville Twp.	Louisville Twp.	25	80	0	10	10	28	78	4	10	14	3	-2	4	0	4
270	2179	Louisville Twp.	Louisville Twp.	3	10	9	150	159	3	8	19	150	169	0	-2	10	0	10
271	2179	Louisville Twp.	Louisville Twp.	103	329	0	15	15	110	305	6	15	21	7	-24	6	0	6
272	2179	Louisville Twp.	Louisville Twp.	15	48	0	0	0	15	42	0	0	0	0	-6	0	0	0
273	2179	Louisville Twp.	Louisville Twp.	5	16	3	100	103	5	14	10	100	110	0	-2	7	0	7
274	2180	Jackson Twp.	Jackson Twp.	19	62	0	2	2	24	67	0	4	4	5	5	0	2	2
275	2180	Jackson Twp.	Jackson Twp.	4	13	0	0	0	6	17	0	0	0	2	4	0	0	0
276	2180	Louisville Twp.	Louisville Twp.	3	10	0	0	0	3	8	0	0	0	0	-2	0	0	0
277	2180	Louisville Twp.	Louisville Twp.	9	29	0	1	1	9	25	0	1	1	0	-4	0	0	0
278	2181	Jackson Twp.	Jackson Twp.	16	52	0	32	32	21	59	0	32	32	5	7	0	0	0
279	2181	Jackson Twp.	Jackson Twp.	35	114	0	22	22	39	110	0	22	22	4	-4	0	0	0
280	2181	Louisville Twp.	Louisville Twp.	127	412	0	10	10	134	380	11	10	21	7	-32	11	0	11
281	2182	Shakopee	Shakopee	156	492	51	86	137	354	991	51	86	137	198	499	0	0	0
282	2182	Shakopee	Shakopee	89	281	10	0	10	107	300	10	0	10	18	19	0	0	0
283	2182	Louisville Twp.	Louisville Twp.	38	120	0	2	2	42	117	0	2	2	4	-3	0	0	0
284	2183	Louisville Twp.	Louisville Twp.	35	106	5	5	10	40	108	5	5	10	5	2	0	0	0
285	2183	Shakopee	Shakopee	11	33	0	5	5	22	60	0	5	5	11	27	0	0	0
286	2183	Shakopee	Shakopee	44	133	0	5	5	57	154	0	5	5	13	21	0	0	0
286	2183	SMSC	SMSC	0	0	0	0	0	60	162	0	0	0	60	162	0	0	0
287	2184	Louisville Twp.	Louisville Twp.	12	33	0	0	0	13	35	0	0	0	1	2	0	0	0
288	2184	Louisville Twp.	Louisville Twp.	7	20	0	10	10	7	19	0	10	10	0	-1	0	0	0
289	2184	Louisville Twp.	Louisville Twp.	29	81	0	0	0	32	87	0	0	0	3	6	0	0	0
290	2185	Sand Creek Twp.	Sand Creek Twp.	0	0	0	0	0	0	0	0	6	6	0	0	0	6	6
291	2185	Sand Creek Twp.	Sand Creek Twp.	15	41	39	183	222	15	37	53	194	247	0	-4	14	11	25
292	2185	Sand Creek Twp.	Sand Creek Twp.	25	69	0	0	0	25	61	0	11	11	0	-8	0	11	11
293	2185	Sand Creek Twp.	Sand Creek Twp.	60	165	0	0	0	60	147	0	21	21	0	-18	0	21	21
294	2185	Jordan	Jordan	281	773	0	20	20	304	746	0	31	31	23	-27	0	11	11
295	2185	Jordan	Jordan	130	357	19	95	114	337	827	87	106	193	207	470	68	11	79
296	2186	Sand Creek Twp.	Sand Creek Twp.	39	99	0	0	0	39	87	7	0	7	0	-12	7	0	7
297	2186	Sand Creek Twp.	Sand Creek Twp.	7	18	0	3	3	7	16	0	3	3	0	-2	0	0	0
298	2186	Sand Creek Twp.	Sand Creek Twp.	26	66	0	2	2	26	58	0	2	2	0	-8	0	0	0
299	2187	Sand Creek Twp.	Sand Creek Twp.	13	38	0	2	2	13	27	0	3	3	0	-11	0	1	1
300	2187	Sand Creek Twp.	Sand Creek Twp.	10	29	0	0	0	11	23	0	0	0	1	-6	0	0	0
301	2188	Spring Lake Twp.	Prior Lake	2	5	0	0	0	7	19	0	0	0	5	14	0	0	0
302	2188	Spring Lake Twp.	Spring Lake Twp.	41	110	0	6	6	41	108	0	6	6	0	-2	0	0	0
303	2189	Sand Creek Twp.	Sand Creek Twp.	32	90	0	5	5	32	82	0	5	5	0	-8	0	0	0

Scott County TAZ	Met Council TAZ	Existing Municipality	Year 2040 Municipality	Year 2014 Socioeconomic Data					Year 2040 Socioeconomic Data					Year 2014 to Year 2040 Growth				
				Households	Population	Retail Employment	Nonretail Employment	Total Employment	Households	Population	Retail Employment	Nonretail Employment	Total Employment	Households	Population	Retail Employment	Nonretail Employment	Total Employment
304	2190	Sand Creek Twp.	Sand Creek Twp.	23	67	1	8	9	23	52	1	12	13	0	-15	0	4	4
305	2190	Jordan	Jordan	0	0	5	73	78	0	0	5	230	235	0	0	0	157	157
306	2191	Sand Creek Twp.	Sand Creek Twp.	31	89	7	38	45	31	70	22	38	60	0	-19	15	0	15
307	2191	Sand Creek Twp.	Sand Creek Twp.	60	172	6	12	18	60	135	18	27	45	0	-37	12	15	27
308	2191	Jordan	Jordan	17	49	0	26	26	27	61	0	28	28	10	12	0	2	2
309	2192	Jordan	Jordan	0	0	98	0	98	0	0	98	0	98	0	0	0	0	0
310	2192	Jordan	Jordan	257	581	30	54	84	357	891	30	213	243	100	310	0	159	159
311	2193	Jordan	Jordan	0	0	77	0	77	0	0	80	1	81	0	0	3	1	4
312	2193	Jordan	Jordan	67	193	20	12	32	99	248	26	24	50	32	55	6	12	18
313	2193	Jordan	Jordan	80	231	6	9	15	109	273	7	18	25	29	42	1	9	10
314	2193	Jordan	Jordan	132	380	0	153	153	182	456	0	295	295	50	76	0	142	142
315	2193	Jordan	Jordan	25	72	5	0	5	40	100	6	0	6	15	28	1	0	1
316	2193	Jordan	Jordan	0	0	0	253	253	0	0	0	497	497	0	0	0	244	244
317	2193	Jordan	Jordan	142	409	0	17	17	181	453	0	33	33	39	44	0	16	16
318	2193	Jordan	Jordan	104	300	0	5	5	204	511	0	9	9	100	211	0	4	4
319	2194	St. Lawrence Twp.	St. Lawrence Twp.	0	0	0	0	0	0	0	0	0	0	0	0	0	0	0
320	2194	St. Lawrence Twp.	St. Lawrence Twp.	0	0	0	0	0	0	0	0	0	0	0	0	0	0	0
321	2194	St. Lawrence Twp.	St. Lawrence Twp.	2	4	0	0	0	52	145	0	0	0	50	141	0	0	0
322	2194	St. Lawrence Twp.	St. Lawrence Twp.	2	4	0	3	3	58	161	0	3	3	56	157	0	0	0
323	2195	St. Lawrence Twp.	St. Lawrence Twp.	37	118	0	0	0	45	112	2	0	2	8	-6	2	0	2
324	2195	Jordan	Jordan	173	551	0	0	0	173	430	0	21	21	0	-121	0	21	21
325	2195	Jordan	Jordan	59	188	0	279	279	139	345	18	419	437	80	157	18	140	158
326	2195	St. Lawrence Twp.	St. Lawrence Twp.	0	0	0	0	0	8	20	0	0	0	8	20	0	0	0
327	2195	Jordan	Jordan	1	3	0	0	0	1	2	0	120	120	0	-1	0	120	120
328	2195	St. Lawrence Twp.	St. Lawrence Twp.	7	22	0	19	19	8	20	2	19	21	1	-2	2	0	2
329	2195	St. Lawrence Twp.	St. Lawrence Twp.	9	29	0	23	23	9	22	0	23	23	0	-7	0	0	0
330	2195	St. Lawrence Twp.	St. Lawrence Twp.	8	25	0	9	9	8	20	0	9	9	0	-5	0	0	0
331	2195	St. Lawrence Twp.	St. Lawrence Twp.	3	10	0	0	0	4	10	0	0	0	1	0	0	0	0
332	2195	St. Lawrence Twp.	St. Lawrence Twp.	13	41	0	0	0	13	32	0	0	0	0	-9	0	0	0
333	2195	St. Lawrence Twp.	St. Lawrence Twp.	11	35	0	0	0	12	30	0	0	0	1	-5	0	0	0
334	2195	St. Lawrence Twp.	St. Lawrence Twp.	3	10	0	0	0	7	17	0	0	0	4	7	0	0	0
335	2195	St. Lawrence Twp.	St. Lawrence Twp.	6	19	0	0	0	6	15	3	0	3	0	-4	3	0	3
336	2196	St. Lawrence Twp.	St. Lawrence Twp.	1	3	0	0	0	1	2	0	0	0	0	-1	0	0	0
337	2196	Belle Plaine	Belle Plaine	27	78	0	0	0	177	438	0	0	0	150	360	0	0	0
338	2196	St. Lawrence Twp.	St. Lawrence Twp.	6	17	0	0	0	6	15	0	0	0	0	-2	0	0	0
339	2196	Belle Plaine	Belle Plaine	266	764	53	52	105	382	945	46	148	194	116	181	-7	96	89
340	2196	Belle Plaine Twp.	Belle Plaine Twp.	2	6	0	0	0	2	5	1	4	5	0	-1	1	4	5
341	2197	St. Lawrence Twp.	St. Lawrence Twp.	3	9	3	40	43	4	10	5	41	46	1	1	2	1	3
342	2197	St. Lawrence Twp.	St. Lawrence Twp.	3	9	0	1	1	4	10	0	1	1	1	1	0	0	0
343	2197	St. Lawrence Twp.	St. Lawrence Twp.	11	34	2	35	37	12	29	4	35	39	1	-5	2	0	2
344	2197	St. Lawrence Twp.	St. Lawrence Twp.	5	15	0	0	0	6	15	0	0	0	1	0	0	0	0
345	2197	St. Lawrence Twp.	St. Lawrence Twp.	1	3	0	0	0	1	2	0	0	0	0	-1	0	0	0
346	2197	St. Lawrence Twp.	St. Lawrence Twp.	3	9	0	0	0	4	10	0	0	0	1	1	0	0	0
347	2198	Jordan	Jordan	133	468	0	2	2	481	1,248	0	7	7	348	780	0	5	5

Scott County TAZ	Met Council TAZ	Existing Municipality	Year 2040 Municipality	Year 2014 Socioeconomic Data					Year 2040 Socioeconomic Data					Year 2014 to Year 2040 Growth				
				Households	Population	Retail Employment	Nonretail Employment	Total Employment	Households	Population	Retail Employment	Nonretail Employment	Total Employment	Households	Population	Retail Employment	Nonretail Employment	Total Employment
348	2198	St. Lawrence Twp.	St. Lawrence Twp.	3	11	0	0	0	10	26	0	0	0	7	15	0	0	0
349	2198	St. Lawrence Twp.	St. Lawrence Twp.	4	14	0	0	0	4	10	0	0	0	0	-4	0	0	0
350	2198	St. Lawrence Twp.	St. Lawrence Twp.	36	127	0	3	3	250	648	0	4	4	214	521	0	1	1
351	2199	Jordan	Jordan	12	43	0	3	3	73	187	0	16	16	61	144	0	13	13
352	2199	Jordan	Jordan	252	900	0	4	4	310	795	0	4	4	58	-105	0	0	0
353	2199	Sand Creek Twp.	Sand Creek Twp.	2	7	0	0	0	25	64	0	100	100	23	57	0	100	100
354	2199	Sand Creek Twp.	Sand Creek Twp.	1	4	0	0	0	1	3	0	0	0	0	-1	0	0	0
355	2199	Sand Creek Twp.	Sand Creek Twp.	6	21	0	0	0	11	28	0	0	0	5	7	0	0	0
356	2199	Sand Creek Twp.	Sand Creek Twp.	2	7	0	0	0	7	18	0	0	0	5	11	0	0	0
357	2200	Jordan	Jordan	61	186	25	77	102	70	177	25	77	102	9	-9	0	0	0
358	2200	Jordan	Jordan	108	330	0	0	0	156	394	0	0	0	48	64	0	0	0
359	2200	Jordan	Jordan	3	9	0	0	0	101	255	0	12	12	98	246	0	12	12
360	2200	Sand Creek Twp.	Sand Creek Twp.	68	208	0	8	8	158	399	0	8	8	90	191	0	0	0
361	2200	Jordan	Jordan	35	107	0	0	0	175	442	1	0	1	140	335	1	0	1
362	2200	Sand Creek Twp.	Sand Creek Twp.	5	15	0	0	0	45	114	9	0	9	40	99	9	0	9
363	2200	Sand Creek Twp.	Sand Creek Twp.	32	98	0	20	20	38	96	0	20	20	6	-2	0	0	0
364	2201	Sand Creek Twp.	Sand Creek Twp.	32	110	0	0	0	32	78	0	0	0	0	-32	0	0	0
365	2202	Sand Creek Twp.	Sand Creek Twp.	69	242	0	3	3	70	191	0	5	5	1	-51	0	2	2
366	2203	Cedar Lake Twp.	Cedar Lake Twp.	88	246	0	30	30	103	264	0	35	35	15	18	0	5	5
367	2203	Cedar Lake Twp.	Cedar Lake Twp.	114	319	0	0	0	176	451	0	7	7	62	132	0	7	7
368	2204	Helena Twp.	Helena Twp.	28	88	0	0	0	36	87	0	1	1	8	-1	0	1	1
369	2204	Helena Twp.	Helena Twp.	47	148	0	0	0	55	132	0	1	1	8	-16	0	1	1
370	2204	Helena Twp.	Helena Twp.	34	107	0	6	6	42	101	0	8	8	8	-6	0	2	2
371	2204	Helena Twp.	Helena Twp.	131	412	0	46	46	138	332	10	56	66	7	-80	10	10	20
372	2205	Helena Twp.	Helena Twp.	49	151	0	18	18	50	120	0	20	20	1	-31	0	2	2
373	2205	Helena Twp.	Helena Twp.	50	154	0	19	19	70	168	10	21	31	20	14	10	2	12
374	2206	Helena Twp.	Helena Twp.	21	65	2	2	4	28	68	2	2	4	7	3	0	0	0
375	2206	Helena Twp.	Helena Twp.	29	90	3	2	5	35	85	3	22	25	6	-5	0	20	20
376	2206	Helena Twp.	Helena Twp.	25	77	2	2	4	29	70	2	2	4	4	-7	0	0	0
377	2206	Helena Twp.	Helena Twp.	6	19	2	2	4	9	22	2	2	4	3	3	0	0	0
378	2207	Belle Plaine Twp.	Belle Plaine Twp.	43	127	0	1	1	43	104	0	5	5	0	-23	0	4	4
379	2208	Belle Plaine Twp.	Belle Plaine	1	3	0	0	0	1	2	0	0	0	0	-1	0	0	0
380	2208	Belle Plaine Twp.	Belle Plaine	1	3	0	1	1	1	2	0	35	35	0	-1	0	34	34
381	2208	Belle Plaine Twp.	Belle Plaine	1	3	0	0	0	1	2	0	0	0	0	-1	0	0	0
382	2208	Belle Plaine Twp.	Belle Plaine	7	20	0	0	0	8	19	0	0	0	1	-1	0	0	0
383	2208	Belle Plaine Twp.	Belle Plaine	1	3	0	0	0	1	2	0	0	0	0	-1	0	0	0
384	2208	Belle Plaine Twp.	Belle Plaine	1	3	0	0	0	1	2	0	0	0	0	-1	0	0	0
385	2208	Belle Plaine Twp.	Belle Plaine	7	20	0	0	0	8	19	0	0	0	1	-1	0	0	0
386	2208	Belle Plaine Twp.	Belle Plaine Twp.	6	17	0	4	4	7	17	0	5	5	1	0	0	1	1
387	2208	Belle Plaine Twp.	Belle Plaine Twp.	21	59	0	0	0	22	53	0	4	4	1	-6	0	4	4
388	2209	Belle Plaine	Belle Plaine	98	301	0	2	2	102	271	0	0	0	4	-30	0	-2	-2
389	2209	Belle Plaine Twp.	Belle Plaine	2	6	0	1	1	77	204	0	3	3	75	198	0	2	2
390	2209	Belle Plaine	Belle Plaine	1	3	0	0	0	90	239	0	0	0	89	236	0	0	0
391	2209	Belle Plaine Twp.	Belle Plaine Twp.	19	58	0	0	0	46	122	0	4	4	27	64	0	4	4

Scott County TAZ	Met Council TAZ	Existing Municipality	Year 2040 Municipality	Year 2014 Socioeconomic Data					Year 2040 Socioeconomic Data					Year 2014 to Year 2040 Growth				
				Households	Population	Retail Employment	Nonretail Employment	Total Employment	Households	Population	Retail Employment	Nonretail Employment	Total Employment	Households	Population	Retail Employment	Nonretail Employment	Total Employment
392	2209	Belle Plaine	Belle Plaine	37	114	0	1	1	237	629	0	6	6	200	515	0	5	5
393	2209	Belle Plaine Twp.	Belle Plaine Twp.	3	9	0	0	0	7	19	0	4	4	4	10	0	4	4
394	2209	Belle Plaine Twp.	Belle Plaine Twp.	5	15	0	0	0	13	34	0	4	4	8	19	0	4	4
395	2209	Belle Plaine Twp.	Belle Plaine Twp.	0	0	0	0	0	4	11	0	4	4	4	11	0	4	4
396	2210	Belle Plaine	Belle Plaine	0	0	125	27	152	0	0	210	174	384	0	0	85	147	232
397	2210	Belle Plaine	Belle Plaine	1	3	65	40	105	3	7	84	250	334	2	4	19	210	229
398	2210	Belle Plaine	Belle Plaine	161	484	1	0	1	191	471	1	0	1	30	-13	0	0	0
399	2210	Belle Plaine	Belle Plaine	91	273	0	0	0	104	256	0	0	0	13	-17	0	0	0
400	2210	Belle Plaine	Belle Plaine	119	357	82	0	82	154	380	106	0	106	35	23	24	0	24
401	2211	Belle Plaine	Belle Plaine	8	17	20	145	165	15	37	43	231	274	7	20	23	86	109
402	2211	Belle Plaine	Belle Plaine	201	436	10	7	17	313	771	21	11	32	112	335	11	4	15
403	2211	Belle Plaine	Belle Plaine	101	219	23	5	28	142	350	50	7	57	41	131	27	2	29
404	2212	Belle Plaine	Belle Plaine	196	469	65	40	105	416	1,021	79	79	158	220	552	14	39	53
405	2212	Belle Plaine	Belle Plaine	99	237	158	70	228	138	339	193	133	326	39	102	35	63	98
406	2212	Belle Plaine	Belle Plaine	199	477	0	198	198	439	1,078	0	375	375	240	601	0	177	177
407	2212	Belle Plaine	Belle Plaine	110	263	57	77	134	142	349	69	147	216	32	86	12	70	82
408	2212	Belle Plaine	Belle Plaine	41	98	66	86	152	99	243	80	166	246	58	145	14	80	94
409	2213	Blakeley Twp.	Belle Plaine	0	0	0	2	2	0	0	0	11	11	0	0	0	9	9
410	2213	Belle Plaine	Belle Plaine	47	115	0	3	3	97	240	0	21	21	50	125	0	18	18
411	2213	Belle Plaine	Belle Plaine	56	137	0	0	0	203	502	7	0	7	147	365	7	0	7
412	2213	Blakeley Twp.	Belle Plaine	3	7	0	0	0	3	7	0	0	0	0	0	0	0	0
413	2213	Belle Plaine	Belle Plaine	0	0	0	18	18	93	230	7	112	119	93	230	7	94	101
414	2213	Belle Plaine	Belle Plaine	17	42	0	17	17	143	354	7	107	114	126	312	7	90	97
415	2214	Blakeley Twp.	Blakeley Twp.	0	0	0	0	0	0	0	0	0	0	0	0	0	0	0
416	2214	Belle Plaine	Belle Plaine	0	0	0	0	0	2	5	0	10	10	2	5	0	10	10
417	2214	Blakeley Twp.	Blakeley Twp.	7	15	0	0	0	7	17	0	0	0	0	2	0	0	0
418	2214	Blakeley Twp.	Belle Plaine	2	4	0	0	0	2	5	0	0	0	0	1	0	0	0
419	2215	Blakeley Twp.	Blakeley Twp.	5	13	0	7	7	5	11	0	12	12	0	-2	0	5	5
420	2215	Blakeley Twp.	Blakeley Twp.	27	68	0	4	4	30	68	0	8	8	3	0	0	4	4
421	2215	Blakeley Twp.	Blakeley Twp.	15	38	0	1	1	20	45	0	1	1	5	7	0	0	0
422	2215	Blakeley Twp.	Blakeley Twp.	22	56	0	5	5	20	45	0	9	9	-2	-11	0	4	4
423	2215	Blakeley Twp.	Blakeley Twp.	21	53	0	8	8	20	45	0	14	14	-1	-8	0	6	6
424	2215	Blakeley Twp.	Blakeley Twp.	14	35	0	0	0	15	34	0	0	0	1	-1	0	0	0
425	2216	Blakeley Twp.	Blakeley Twp.	22	67	16	0	16	20	48	16	0	16	-2	-19	0	0	0
426	2216	Belle Plaine Twp.	Belle Plaine Twp.	32	98	7	0	7	32	78	7	4	11	0	-20	0	4	4
427	2216	Blakeley Twp.	Blakeley Twp.	28	86	0	8	8	30	73	0	36	36	2	-13	0	28	28
428	2217	Belle Plaine	Belle Plaine	1	4	0	0	0	51	136	5	42	47	50	132	5	42	47
429	2217	Belle Plaine	Belle Plaine	52	189	0	18	18	202	540	0	59	59	150	351	0	41	41
430	2217	Belle Plaine Twp.	Belle Plaine	6	22	0	1	1	68	182	4	1	5	62	160	4	0	4
431	2218	Belle Plaine	Belle Plaine	135	457	0	0	0	135	347	0	0	0	0	-110	0	0	0
432	2218	Belle Plaine	Belle Plaine	137	464	0	0	0	137	353	0	0	0	0	-111	0	0	0
433	2218	Belle Plaine Twp.	Belle Plaine	1	3	0	0	0	40	103	0	0	0	39	100	0	0	0
434	2218	Belle Plaine	Belle Plaine	0	0	0	0	0	150	386	0	0	0	150	386	0	0	0
435	2218	Belle Plaine	Belle Plaine	172	583	0	27	27	172	443	0	103	103	0	-140	0	76	76

Scott County TAZ	Met Council TAZ	Existing Municipality	Year 2040 Municipality	Year 2014 Socioeconomic Data					Year 2040 Socioeconomic Data					Year 2014 to Year 2040 Growth				
				Households	Population	Retail Employment	Nonretail Employment	Total Employment	Households	Population	Retail Employment	Nonretail Employment	Total Employment	Households	Population	Retail Employment	Nonretail Employment	Total Employment
436	2218	Belle Plaine	Belle Plaine	0	0	0	0	0	100	257	0	0	0	100	257	0	0	0
437	2218	Belle Plaine Twp.	Belle Plaine Twp.	17	58	0	20	20	68	175	0	20	20	51	117	0	0	0
438	2219	Belle Plaine Twp.	Belle Plaine Twp.	9	25	0	0	0	10	24	0	4	4	1	-1	0	4	4
439	2219	Belle Plaine Twp.	Belle Plaine Twp.	25	69	0	0	0	27	66	0	4	4	2	-3	0	4	4
440	2219	Belle Plaine Twp.	Belle Plaine Twp.	13	36	0	0	0	14	34	0	4	4	1	-2	0	4	4
441	2220	Belle Plaine Twp.	Belle Plaine Twp.	8	21	0	0	0	10	25	0	4	4	2	4	0	4	4
442	2220	Belle Plaine Twp.	Belle Plaine Twp.	16	43	0	0	0	16	39	0	4	4	0	-4	0	4	4
443	2220	Belle Plaine Twp.	Belle Plaine Twp.	13	35	0	1	1	14	34	1	4	5	1	-1	1	3	4
444	2220	Belle Plaine Twp.	Belle Plaine Twp.	17	45	1	0	1	19	47	0	6	6	2	2	-1	6	5
445	2221	Belle Plaine Twp.	Belle Plaine Twp.	29	91	0	0	0	29	71	0	4	4	0	-20	0	4	4
446	2222	Helena Twp.	Helena Twp.	10	28	0	0	0	15	34	0	1	1	5	6	0	1	1
447	2222	Helena Twp.	Helena Twp.	7	20	0	0	0	12	27	0	1	1	5	7	0	1	1
448	2222	Helena Twp.	Helena Twp.	7	20	0	0	0	12	27	0	1	1	5	7	0	1	1
449	2222	Helena Twp.	Helena Twp.	7	20	0	0	0	7	16	5	1	6	0	-4	5	1	6
450	2222	Helena Twp.	Helena Twp.	5	14	0	30	30	5	11	0	44	44	0	-3	0	14	14
451	2222	New Prague	New Prague	1	3	0	0	0	182	416	0	0	0	181	413	0	0	0
452	2222	Helena Twp.	Helena Twp.	5	14	0	0	0	10	23	0	1	1	5	9	0	1	1
453	2222	Helena Twp.	Helena Twp.	44	124	0	0	0	50	114	0	1	1	6	-10	0	1	1
454	2222	New Prague	New Prague	234	658	0	154	154	297	679	40	234	274	63	21	40	80	120
455	2222	New Prague	New Prague	45	126	0	94	94	290	663	0	140	140	245	537	0	46	46
456	2223	New Prague	New Prague	60	125	0	388	388	161	365	0	606	606	101	240	0	218	218
457	2223	New Prague	New Prague	70	146	23	150	173	103	233	26	251	277	33	87	3	101	104
458	2223	New Prague	New Prague	144	300	122	170	292	196	444	135	275	410	52	144	13	105	118
459	2224	New Prague	New Prague	223	575	0	42	42	297	676	0	101	101	74	101	0	59	59
460	2224	New Prague	New Prague	91	235	147	100	247	259	589	213	100	313	168	354	66	0	66
461	2224	New Prague	New Prague	94	242	21	29	50	108	246	30	75	105	14	4	9	46	55
462	2225	New Prague	New Prague	1	3	13	51	64	67	152	20	292	312	66	149	7	241	248
463	2225	Helena Twp.	Helena Twp.	1	3	0	0	0	4	9	0	24	24	3	6	0	24	24
464	2225	New Prague	New Prague	356	957	0	32	32	526	1,197	0	32	32	170	240	0	0	0
465	2225	New Prague	New Prague	5	13	0	151	151	44	100	0	201	201	39	87	0	50	50
466	2225	New Prague	New Prague	131	352	0	0	0	208	473	0	2	2	77	121	0	2	2
467	2225	New Prague	New Prague	87	234	179	13	192	165	376	179	44	223	78	142	0	31	31
468	2226	Helena Twp.	Helena Twp.	17	61	0	0	0	20	46	0	2	2	3	-15	0	2	2
469	2226	New Prague	New Prague	106	383	1	49	50	197	448	30	112	142	91	65	29	63	92
470	2226	New Prague	New Prague	0	0	0	14	14	13	30	120	14	134	13	30	120	0	120
471	2227	Helena Twp.	Helena Twp.	10	35	0	0	0	12	29	0	1	1	2	-6	0	1	1
472	2227	Helena Twp.	Helena Twp.	12	42	0	0	0	14	34	0	2	2	2	-8	0	2	2
473	2227	Helena Twp.	Helena Twp.	5	17	0	0	0	7	17	0	1	1	2	0	0	1	1
474	2227	Helena Twp.	Helena Twp.	27	94	26	2	28	27	65	26	3	29	0	-29	0	1	1
475	2228	Cedar Lake Twp.	Cedar Lake Twp.	30	100	0	31	31	40	102	0	36	36	10	2	0	5	5
476	2229	Cedar Lake Twp.	Cedar Lake Twp.	84	268	2	18	20	99	254	2	25	27	15	-14	0	7	7
477	2229	Cedar Lake Twp.	Cedar Lake Twp.	66	210	0	18	18	111	285	0	25	25	45	75	0	7	7
478	2230	Cedar Lake Twp.	Cedar Lake Twp.	52	164	3	35	38	67	172	3	40	43	15	8	0	5	5
479	2230	Cedar Lake Twp.	Cedar Lake Twp.	127	401	3	9	12	192	492	3	17	20	65	91	0	8	8

Scott County TAZ	Met Council TAZ	Existing Municipality	Year 2040 Municipality	Year 2014 Socioeconomic Data					Year 2040 Socioeconomic Data					Year 2014 to Year 2040 Growth				
				Households	Population	Retail Employment	Nonretail Employment	Total Employment	Households	Population	Retail Employment	Nonretail Employment	Total Employment	Households	Population	Retail Employment	Nonretail Employment	Total Employment
480	2230	Cedar Lake Twp.	Cedar Lake Twp.	90	284	7	2	9	122	313	7	10	17	32	29	0	8	8
481	2230	Cedar Lake Twp.	Cedar Lake Twp.	37	117	0	14	14	60	154	0	21	21	23	37	0	7	7
482	2231	Spring Lake Twp.	Spring Lake Twp.	55	153	15	11	26	60	157	15	25	40	5	4	0	14	14
483	2232	Spring Lake Twp.	Spring Lake Twp.	131	396	8	51	59	134	346	8	51	59	3	-50	0	0	0
484	2232	Spring Lake Twp.	Spring Lake Twp.	43	130	1	16	17	56	145	1	21	22	13	15	0	5	5
485	2233	Spring Lake Twp.	Prior Lake	2	6	0	0	0	102	272	0	0	0	100	266	0	0	0
486	2233	Spring Lake Twp.	Spring Lake Twp.	91	291	0	38	38	96	256	10	38	48	5	-35	10	0	10
487	2233	Spring Lake Twp.	Spring Lake Twp.	11	35	0	0	0	28	75	0	0	0	17	40	0	0	0
488	2233	Spring Lake Twp.	Spring Lake Twp.	101	323	0	25	25	106	282	0	25	25	5	-41	0	0	0
489	2233	Spring Lake Twp.	Spring Lake Twp.	51	163	0	23	23	74	197	0	23	23	23	34	0	0	0
490	2234	Prior Lake	Prior Lake	216	598	12	27	39	236	617	12	27	39	20	19	0	0	0
491	2234	Spring Lake Twp.	Spring Lake Twp.	106	294	0	0	0	556	1,453	0	0	0	450	1,159	0	0	0
492	2234	Spring Lake Twp.	Spring Lake Twp.	28	78	0	10	10	38	99	0	23	23	10	21	0	13	13
493	2235	Prior Lake	Prior Lake	26	74	0	3	3	26	63	0	3	3	0	-11	0	0	0
494	2235	Spring Lake Twp.	Spring Lake Twp.	78	222	2	67	69	82	198	2	71	73	4	-24	0	4	4
495	2235	Spring Lake Twp.	Spring Lake Twp.	31	88	0	0	0	32	77	0	0	0	1	-11	0	0	0
496	2236	Spring Lake Twp.	Spring Lake Twp.	129	365	0	59	59	174	431	0	59	59	45	66	0	0	0
497	2236	Spring Lake Twp.	Spring Lake Twp.	99	280	0	0	0	144	356	0	0	0	45	76	0	0	0
498	2237	Cedar Lake Twp.	Cedar Lake Twp.	57	182	0	31	31	79	203	0	36	36	22	21	0	5	5
499	2237	Cedar Lake Twp.	Cedar Lake Twp.	91	291	0	0	0	114	292	0	8	8	23	1	0	8	8
500	2237	Cedar Lake Twp.	Cedar Lake Twp.	50	160	0	0	0	97	249	0	8	8	47	89	0	8	8
501	2238	Cedar Lake Twp.	Cedar Lake Twp.	35	111	0	1	1	60	154	0	9	9	25	43	0	8	8
502	2238	Cedar Lake Twp.	Cedar Lake Twp.	55	175	0	22	22	80	205	0	28	28	25	30	0	6	6
503	2239	New Market Twp.	New Market Twp.	38	124	0	1	1	40	110	0	1	1	2	-14	0	0	0
504	2240	Credit River Twp.	Credit River Twp.	16	53	0	0	0	18	48	0	0	0	2	-5	0	0	0
505	2240	New Market Twp.	New Market Twp.	29	96	0	25	25	35	93	0	25	25	6	-3	0	0	0
506	2240	New Market Twp.	New Market Twp.	13	43	0	0	0	16	42	0	0	0	3	-1	0	0	0
507	2240	New Market Twp.	New Market Twp.	10	33	0	0	0	12	32	0	0	0	2	-1	0	0	0
508	2241	Credit River Twp.	Credit River Twp.	174	606	0	20	20	210	595	0	20	20	36	-11	0	0	0
509	2242	Credit River Twp.	Credit River Twp.	5	11	0	2	2	10	24	0	2	2	5	13	0	0	0
510	2243	Credit River Twp.	Credit River Twp.	118	332	0	11	11	148	360	0	11	11	30	28	0	0	0
511	2243	Credit River Twp.	Credit River Twp.	100	281	0	6	6	130	317	0	6	6	30	36	0	0	0
512	2243	Credit River Twp.	Credit River Twp.	173	486	0	7	7	182	443	0	7	7	9	-43	0	0	0
513	2244	Prior Lake	Prior Lake	151	420	2	352	354	151	369	2	575	577	0	-51	0	223	223
514	2244	Prior Lake	Prior Lake	33	92	30	3	33	333	814	30	4	34	300	722	0	1	1
515	2245	Savage	Savage	5	16	0	175	175	10	26	28	175	203	5	10	28	0	28
516	2245	Savage	Savage	208	677	1	22	23	210	543	50	22	72	2	-134	49	0	49
517	2245	Savage	Savage	0	0	0	0	0	200	517	0	0	0	200	517	0	0	0
518	2245	Savage	Savage	19	62	0	0	0	419	1,083	0	0	0	400	1,021	0	0	0
519	2246	Savage	Savage	105	311	0	0	0	125	352	0	0	0	20	41	0	0	0
520	2246	Savage	Savage	79	234	0	61	61	510	1,434	0	164	164	431	1,200	0	103	103
521	2246	Savage	Savage	67	199	0	6	6	200	563	0	17	17	133	364	0	11	11
522	2246	Savage	Savage	31	92	0	0	0	70	197	0	0	0	39	105	0	0	0
523	2246	Savage	Savage	13	39	0	0	0	650	1,828	0	0	0	637	1,789	0	0	0

Scott County TAZ	Met Council TAZ	Existing Municipality	Year 2040 Municipality	Year 2014 Socioeconomic Data					Year 2040 Socioeconomic Data					Year 2014 to Year 2040 Growth				
				Households	Population	Retail Employment	Nonretail Employment	Total Employment	Households	Population	Retail Employment	Nonretail Employment	Total Employment	Households	Population	Retail Employment	Nonretail Employment	Total Employment
524	2246	Savage	Savage	17	50	0	0	0	200	563	0	0	0	183	513	0	0	0
525	2247	Credit River Twp.	Credit River Twp.	185	544	0	10	10	205	499	0	10	10	20	-45	0	0	0
526	2247	Credit River Twp.	Credit River Twp.	39	115	0	36	36	55	134	0	41	41	16	19	0	5	5
527	2248	Credit River Twp.	Credit River Twp.	23	66	0	0	0	30	73	0	0	0	7	7	0	0	0
528	2248	Credit River Twp.	Credit River Twp.	3	9	0	10	10	9	22	0	14	14	6	13	0	4	4
529	2248	Credit River Twp.	Credit River Twp.	84	241	0	0	0	92	224	0	0	0	8	-17	0	0	0
530	2249	Credit River Twp.	Credit River Twp.	52	170	0	20	20	62	151	0	20	20	10	-19	0	0	0
531	2249	Credit River Twp.	Credit River Twp.	72	235	0	131	131	88	214	0	131	131	16	-21	0	0	0
532	2250	Credit River Twp.	Credit River Twp.	166	578	35	56	91	200	566	35	61	96	34	-12	0	5	5
533	2251	Credit River Twp.	Credit River Twp.	184	571	0	21	21	230	654	0	25	25	46	83	0	4	4
534	2252	Credit River Twp.	Credit River Twp.	56	171	0	0	0	80	227	0	0	0	24	56	0	0	0
535	2252	Credit River Twp.	Credit River Twp.	142	434	0	15	15	242	688	0	20	20	100	254	0	5	5
536	2253	Credit River Twp.	Credit River Twp.	59	199	0	35	35	60	169	0	35	35	1	-30	0	0	0
537	2253	New Market Twp.	New Market Twp.	42	141	0	11	11	67	188	9	11	20	25	47	9	0	9
538	2253	New Market Twp.	New Market Twp.	79	266	0	16	16	104	293	0	16	16	25	27	0	0	0
539	2254	Credit River Twp.	Credit River Twp.	108	355	7	5	12	115	326	7	5	12	7	-29	0	0	0
540	2254	New Market Twp.	New Market Twp.	141	464	8	44	52	145	411	8	44	52	4	-53	0	0	0
541	2255	New Market Twp.	New Market Twp.	11	32	5	599	604	11	32	5	221	226	0	0	0	-378	-378
542	2256	New Market Twp.	New Market Twp.	161	466	46	186	232	161	443	46	186	232	0	-23	0	0	0
543	2256	New Market Twp.	New Market Twp.	37	107	4	52	56	37	102	4	52	56	0	-5	0	0	0
544	2256	New Market Twp.	New Market Twp.	28	81	0	73	73	29	80	0	73	73	1	-1	0	0	0
545	2257	New Market Twp.	New Market Twp.	184	577	0	25	25	189	528	0	25	25	5	-49	0	0	0
546	2258	New Market Twp.	New Market Twp.	42	130	0	2	2	42	112	0	2	2	0	-18	0	0	0
547	2258	New Market Twp.	New Market Twp.	36	111	0	0	0	61	162	0	0	0	25	51	0	0	0
548	2258	New Market Twp.	New Market Twp.	1	3	0	0	0	1	3	0	0	0	0	0	0	0	0
549	2258	New Market Twp.	New Market Twp.	6	19	0	0	0	6	16	0	0	0	0	-3	0	0	0
550	2258	New Market Twp.	New Market Twp.	7	22	0	19	19	7	19	0	19	19	0	-3	0	0	0
551	2258	New Market Twp.	New Market Twp.	1	3	0	0	0	1	3	0	0	0	0	0	0	0	0
552	2258	New Market Twp.	New Market Twp.	2	6	0	0	0	2	5	0	91	91	0	-1	0	91	91
553	2258	New Market Twp.	New Market Twp.	4	12	0	0	0	4	11	0	0	0	0	-1	0	0	0
554	2258	New Market Twp.	New Market Twp.	2	6	0	0	0	2	5	0	0	0	0	-1	0	0	0
555	2259	New Market Twp.	New Market Twp.	36	115	0	0	0	91	245	0	0	0	55	130	0	0	0
556	2259	New Market Twp.	New Market Twp.	31	99	0	0	0	91	245	0	0	0	60	146	0	0	0
557	2259	New Market Twp.	New Market Twp.	15	48	0	13	13	35	94	0	50	50	20	46	0	37	37
558	2259	New Market Twp.	New Market Twp.	18	58	0	0	0	57	154	0	0	0	39	96	0	0	0
559	2259	Elko New Market	Elko New Market	3	10	0	45	45	351	945	0	75	75	348	935	0	30	30
560	2259	New Market Twp.	New Market Twp.	5	16	23	4	27	31	83	23	15	38	26	67	0	11	11
561	2259	Elko New Market	Elko New Market	152	486	79	9	88	590	1,589	97	71	168	438	1,103	18	62	80
562	2260	New Market Twp.	New Market Twp.	9	30	0	0	0	20	54	0	0	0	11	24	0	0	0
563	2260	Elko New Market	Elko New Market	232	763	0	10	10	232	625	0	29	29	0	-138	0	19	19
564	2260	Elko New Market	Elko New Market	320	1,052	35	91	126	528	1,422	82	229	311	208	370	47	138	185
565	2260	New Market Twp.	New Market Twp.	10	33	0	0	0	16	43	0	0	0	6	10	0	0	0
566	2260	Elko New Market	Elko New Market	2	7	0	0	0	356	959	0	0	0	354	952	0	0	0
567	2260	New Market Twp.	New Market Twp.	15	49	0	41	41	26	70	0	42	42	11	21	0	1	1

Scott County TAZ	Met Council TAZ	Existing Municipality	Year 2040 Municipality	Year 2014 Socioeconomic Data					Year 2040 Socioeconomic Data					Year 2014 to Year 2040 Growth				
				Households	Population	Retail Employment	Nonretail Employment	Total Employment	Households	Population	Retail Employment	Nonretail Employment	Total Employment	Households	Population	Retail Employment	Nonretail Employment	Total Employment
568	2260	New Market Twp.	New Market Twp.	16	53	0	0	0	27	73	0	0	0	11	20	0	0	0
569	2260	New Market Twp.	New Market Twp.	20	66	0	0	0	31	83	0	0	0	11	17	0	0	0
570	2260	New Market Twp.	New Market Twp.	2	7	0	0	0	20	54	0	0	0	18	47	0	0	0
571	2260	New Market Twp.	New Market Twp.	13	43	0	0	0	24	65	0	0	0	11	22	0	0	0
572	2260	New Market Twp.	New Market Twp.	19	62	0	0	0	25	67	0	0	0	6	5	0	0	0
573	2261	Elko New Market	Elko New Market	26	79	0	0	0	379	1,021	3	0	3	353	942	3	0	3
574	2261	Elko New Market	Elko New Market	102	312	27	43	70	234	630	114	304	418	132	318	87	261	348
575	2261	Elko New Market	Elko New Market	208	635	0	26	26	792	2,133	2	150	152	584	1,498	2	124	126
576	2261	New Market Twp.	New Market Twp.	10	31	0	0	0	10	27	0	0	0	0	-4	0	0	0
577	2262	New Market Twp.	New Market Twp.	6	22	23	48	71	16	43	78	120	198	10	21	55	72	127
578	2262	Elko New Market	Elko New Market	305	1,099	6	4	10	537	1,441	7	5	12	232	342	1	1	2
579	2262	New Market Twp.	New Market Twp.	14	50	0	0	0	30	81	0	0	0	16	31	0	0	0
580	2262	New Market Twp.	New Market Twp.	14	50	0	0	0	27	72	0	0	0	13	22	0	0	0
581	2263	New Market Twp.	New Market Twp.	27	68	1	12	13	27	71	1	194	195	0	3	0	182	182
582	2263	New Market Twp.	New Market Twp.	25	63	0	11	11	25	65	0	11	11	0	2	0	0	0
583	2156	Prior Lake	Prior Lake	315	844	0	32	32	322	726	0	330	330	7	-118	0	298	298
				47,560	139,469	10,155	32,518	42,673	77,361	206,058	17,668	53,472	71,140	29,801	66,589	7,513	20,954	28,467

Appendix B

Scott County Roadway Improvement Assumptions







No Roadway Improvements (Add in capacity improvements between 2014-2017)

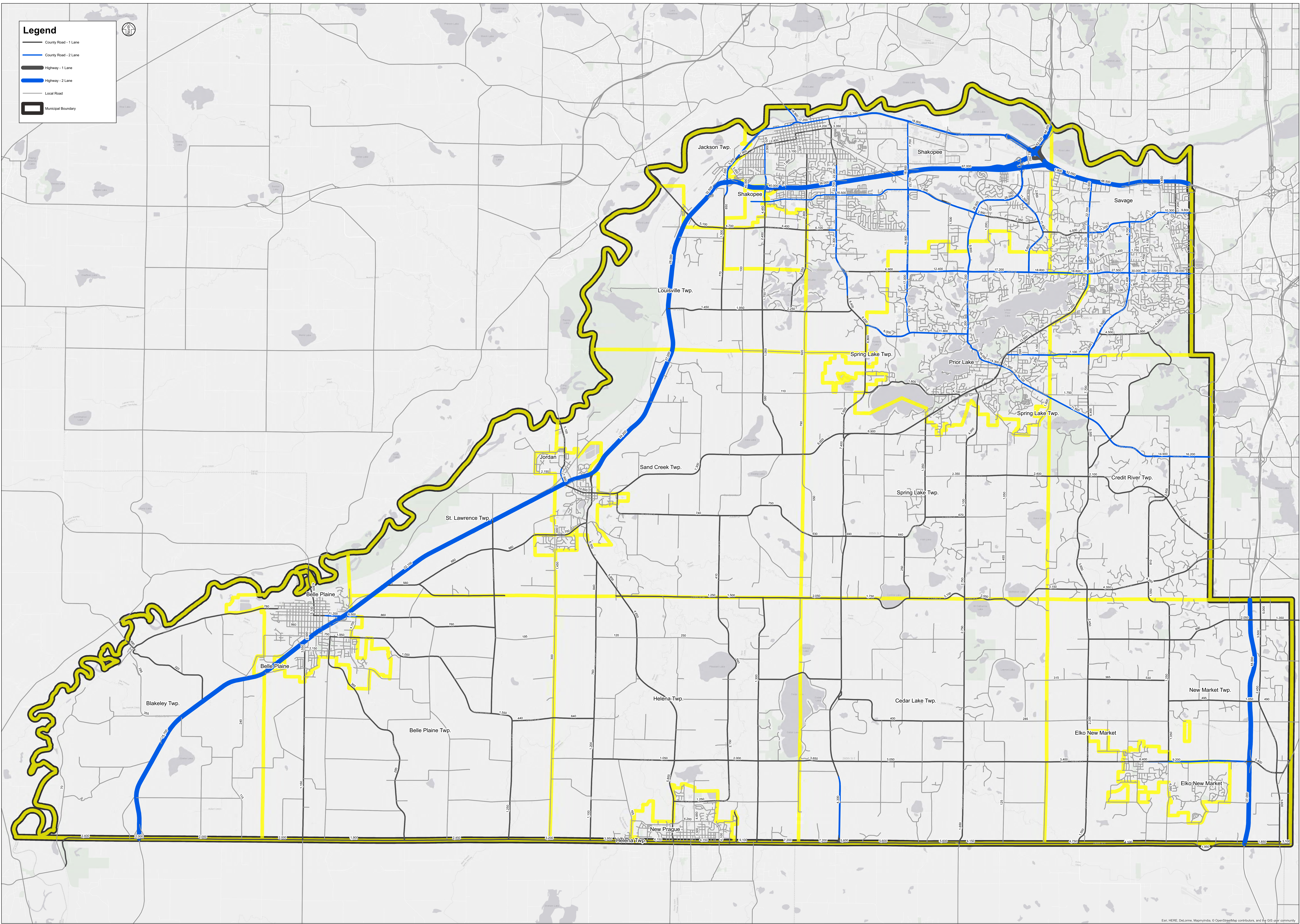
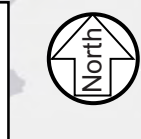
Project	Start/End Point	Year	Type
CH 17 (CP 17-31)	800' S of CH 78 to CH 16	2013-2014	Reconstruct from 2 lane to 4 lane
CH 78	Jennifer Lane to CH 17	2013-2014	Reconstruct from 2 lane to 4 lane
Valley View Road City of Shakopee	Sarazin St. to Evergreen Ln	2014	New road 2-lanes
CH 44 (Fish Point Rd to CH 27)	CH 27 to 1100' East of Fish Point Rd	2014	Reconstruct from 2 lane to 4 lane
CH 17 (CP 17-32)	CH 42 Interchange to 800' S of CH 78	2015	Reconstruct from 2 lane to 4 lane
Jennifer Lane - City of Shakopee		2015	New road 2-lanes
CH 16 (CP 16-31)	CH 83 to CH 21	2016	Reconstruct from 2 lane to 4 lane
CH 83 (CP 83-18)	CH 82 to Wilds Parkway	2016-2017	Reconstruct from 2 lane to 4 lane
CH 27/CH 68 intersection (CP 27-19)	CH 27/CH 68 intersection	2017	Roundabout
ATMS (CP 99-02)	Countywide traffic monitoring system	2017	ITS improvement
CH 16 New Alignment (CP 16-27)	CH 15 to Windermere	2017	New road alignment/extension
Tintaocanku	CH 21 to McKenna	2013-2014	New roadway
Stemmer Ridge extension	CH 82 and CH 12	2017	New roadway

Funded Roadway Improvements (Capacity improvements in CIP 2017-2026, STIP 2017-2020)

Project	Start/End Point	Year	Type
Collector Road - Canterbury connection	Shenandoah Dr to 12th Ave	2018	New road alignment
Tintaocanku	McKenna to CH 83	2018-19	New roadway
CH 16 New Alignment	Windermere to CH 69	2020	New road alignment
Mobile Manor Frontage Rd (169-01)	2,300 Feet	2018	New road 2-lanes
CH 83 (CP 83-22)	in Shakopee, 4th Ave to CH 101	2018	add turnlanes
TH 169/TH 41/CH 78 interchange (CP 169-06)	TH 169/TH 41/CH 78 intersection, CH 14 overpass	2018	Interchange, overpass, frontage roads
TH 13/CH 21 Intersection (CP 21-27)	TH 13/CH 21 intersection	2019	Intersection improvements
CH 46/CH 86 Roundabout (CP 46-03)	CH 46/CH 86 intersection	2018	Roundabout
CH 42/TH 13 intersection (CP 42-17)	CH 42/TH 13 intersection	2018	Add dual left turn lane on CH 42 to model
CH 42 (CP 42-19)	CH 17 to CH 83	2020	Expansion to 4 lanes
CH 27 (CP 37-16)	CH 21 to CH 44	2021	Expansion to 4 lanes
CH 2/CH 15 intersection (CP 02-11)	CH 2/CH 15 roundabout	2023	Roundabout
CH 17 (CP 17-35)	CH 82 to CH 42	2025	Expansion to 4 lanes
TH 41 (SP 010-596-011)	US 212 to CSAH 14 in Chaska	2018	Expansion to 4 lanes (listed in STIP as 4 lanes)
I-35W bridge improvements	TH 13 to CH 1 (Dakota/Hennepin Co.)	2020	Add bridge capacity
CH 2/CH 91 intersection		2020	Roundabout
TH 41	61 thru downtown Chaska		4 lane to 3-lane
TH 13/Dakota	intersection	2022	Grade separation
Carriage Hills Parkway connection (Prior Lake)	Raven Ct and Crest Ave	2018	Finish gap - collector

Legend

-  County Road - 1 Lane
-  County Road - 2 Lane
-  Highway - 1 Lane
-  Highway - 2 Lane
-  Local Road
-  Municipal Boundary

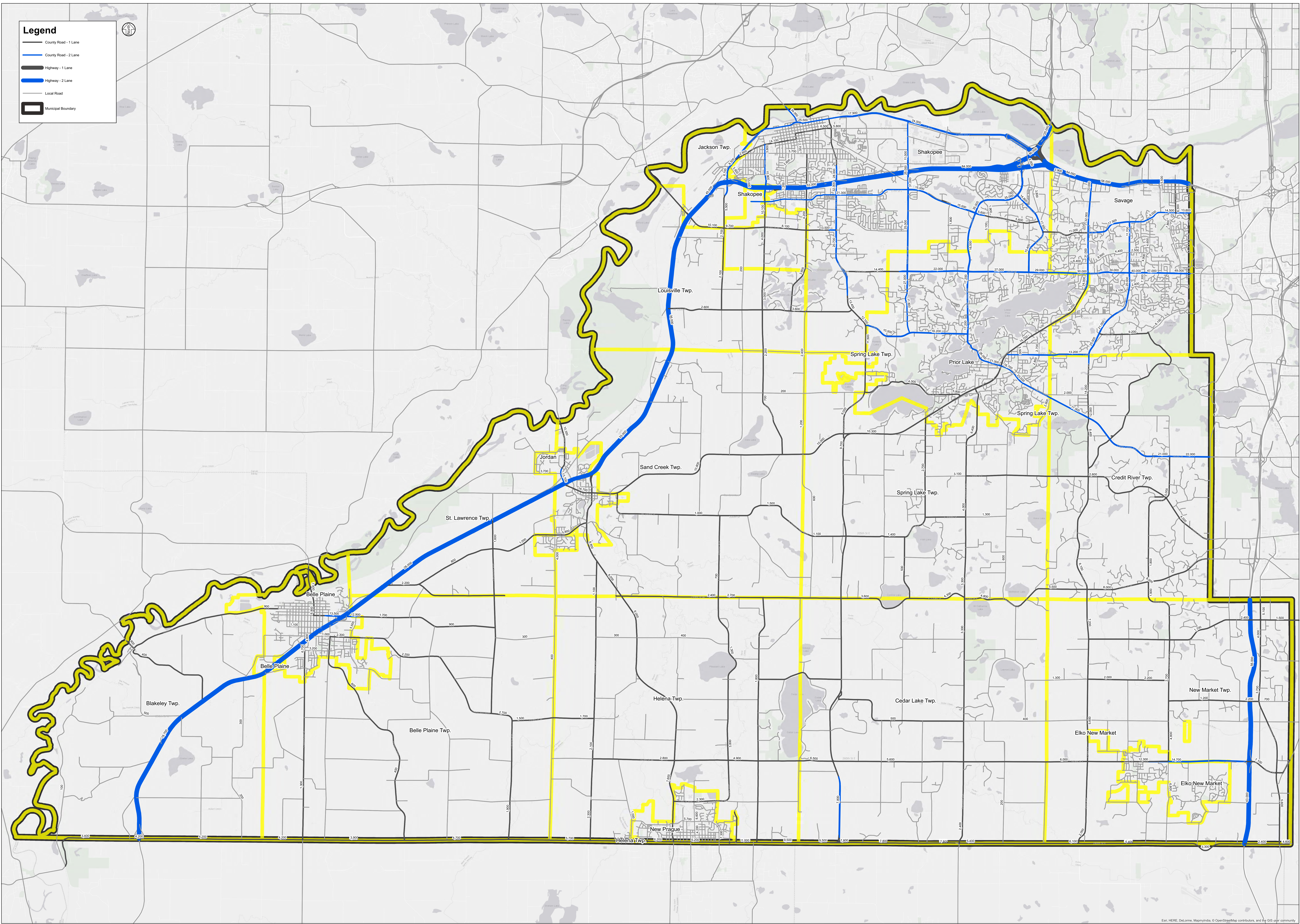
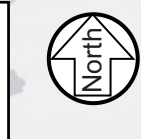


Q:\Projects\10374\GIS\ScottCo_Forecast_20180320.mxd

Esri, HERE, DeLorme, MapmyIndia, © OpenStreetMap contributors, and the GIS user community

Legend

- County Road - 1 Lane
- County Road - 2 Lane
- Highway - 1 Lane
- Highway - 2 Lane
- Local Road
- Municipal Boundary

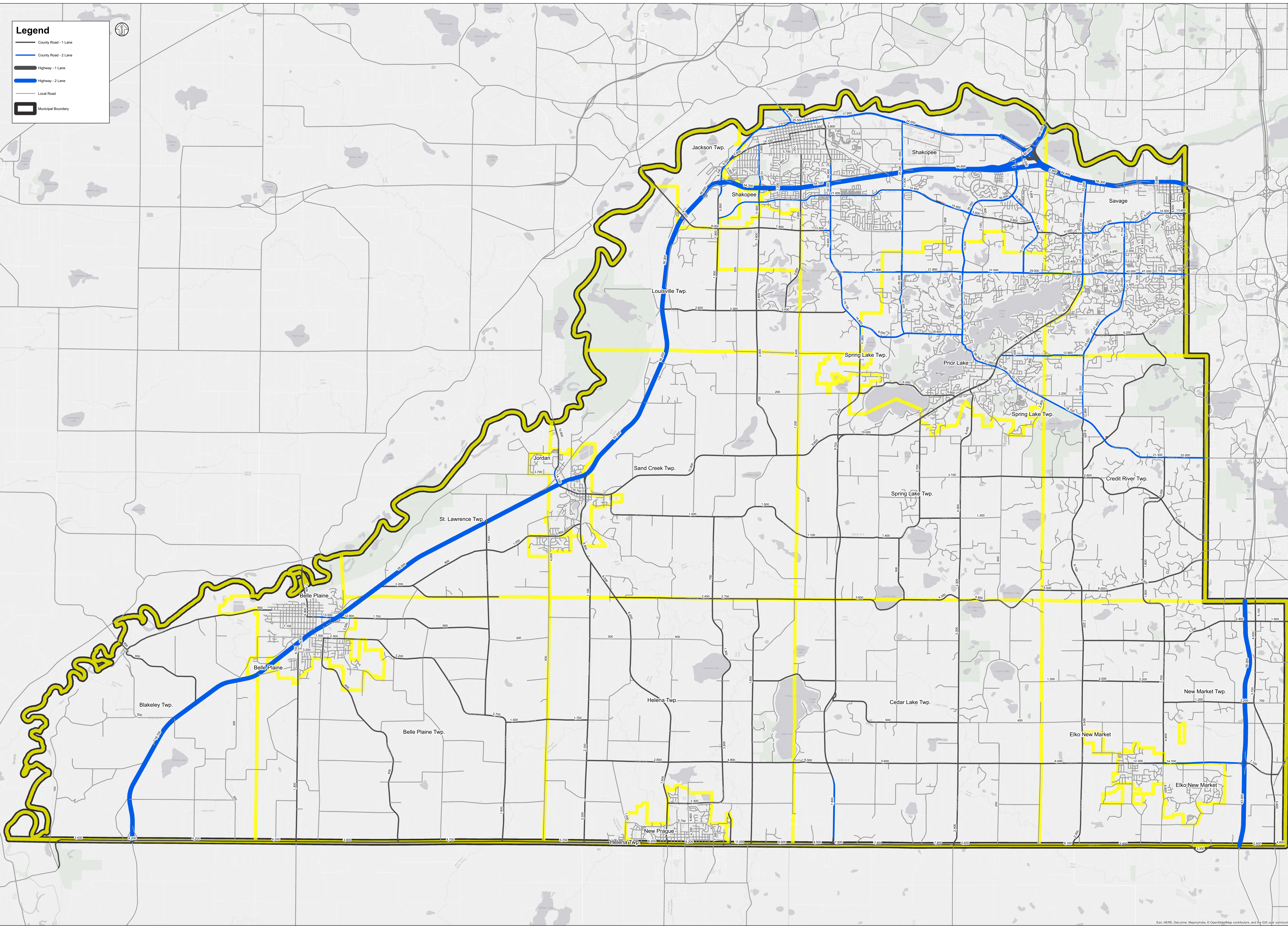
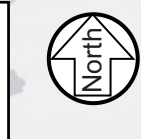


Q:\Projects\10374\GIS\ScottCo_Forecasts_20180320.mxd

Esri, HERE, DeLorme, MapmyIndia, © OpenStreetMap contributors, and the GIS user community

Legend

- County Road - 1 Lane
- County Road - 2 Lane
- Highway - 1 Lane
- Highway - 2 Lane
- Local Road
- Municipal Boundary

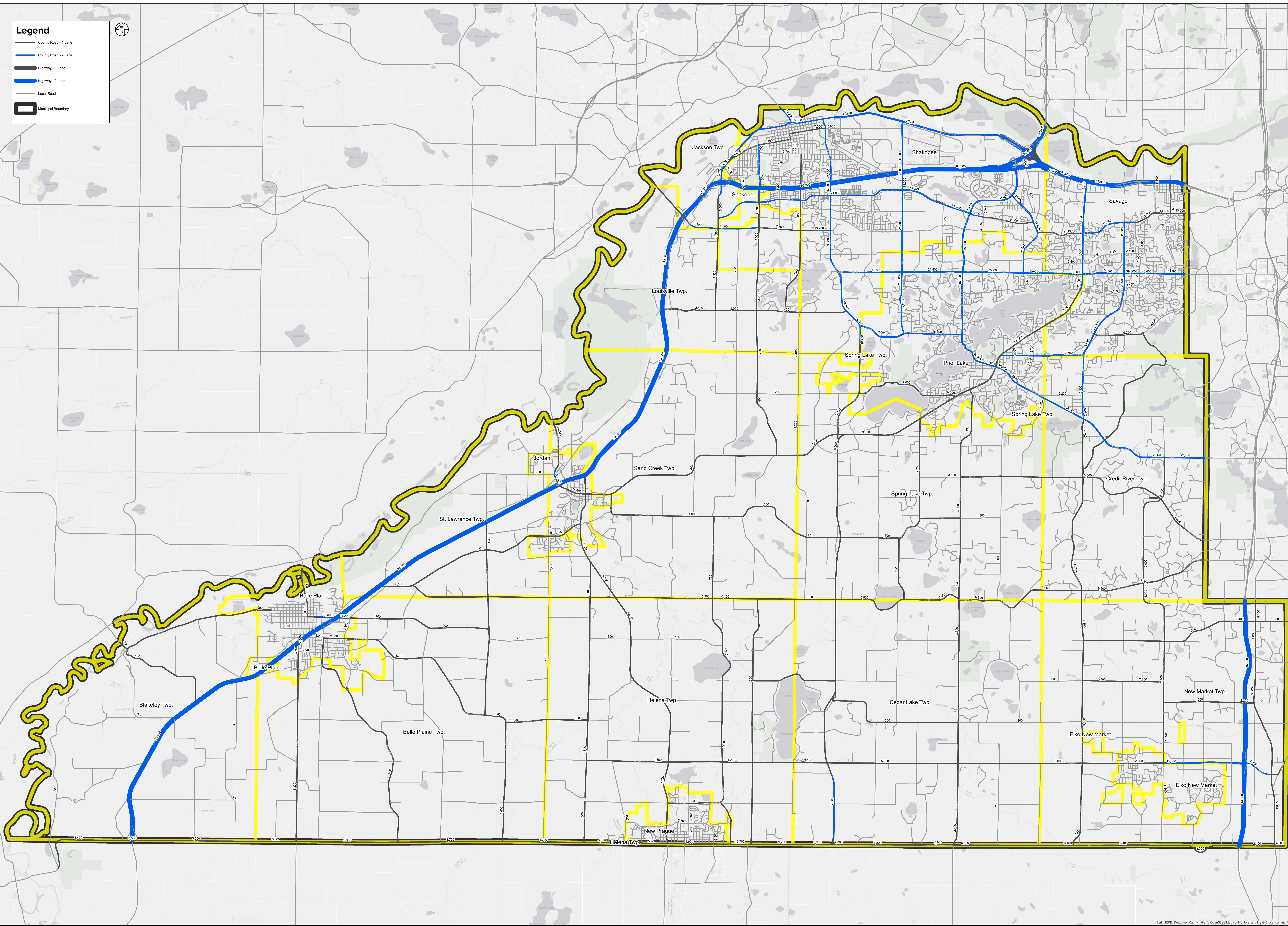


Q:\Projects\10374\GIS\ScottCo_Forecasts_20180320.mxd

Esri, HERE, DeLorme, MapmyIndia, © OpenStreetMap contributors, and the GIS user community

Legend

- County Road - 1 Lane
- County Road - 2 Lane
- Highway - 1 Lane
- Highway - 2 Lane
- Local Road
- Municipal Boundary



Q:\Projects\10374\GIS\ScottCo_Forecasts_20180320.mxd

Esri, HERE, DeLorme, MapmyIndia, © OpenStreetMap contributors, and the GIS user community