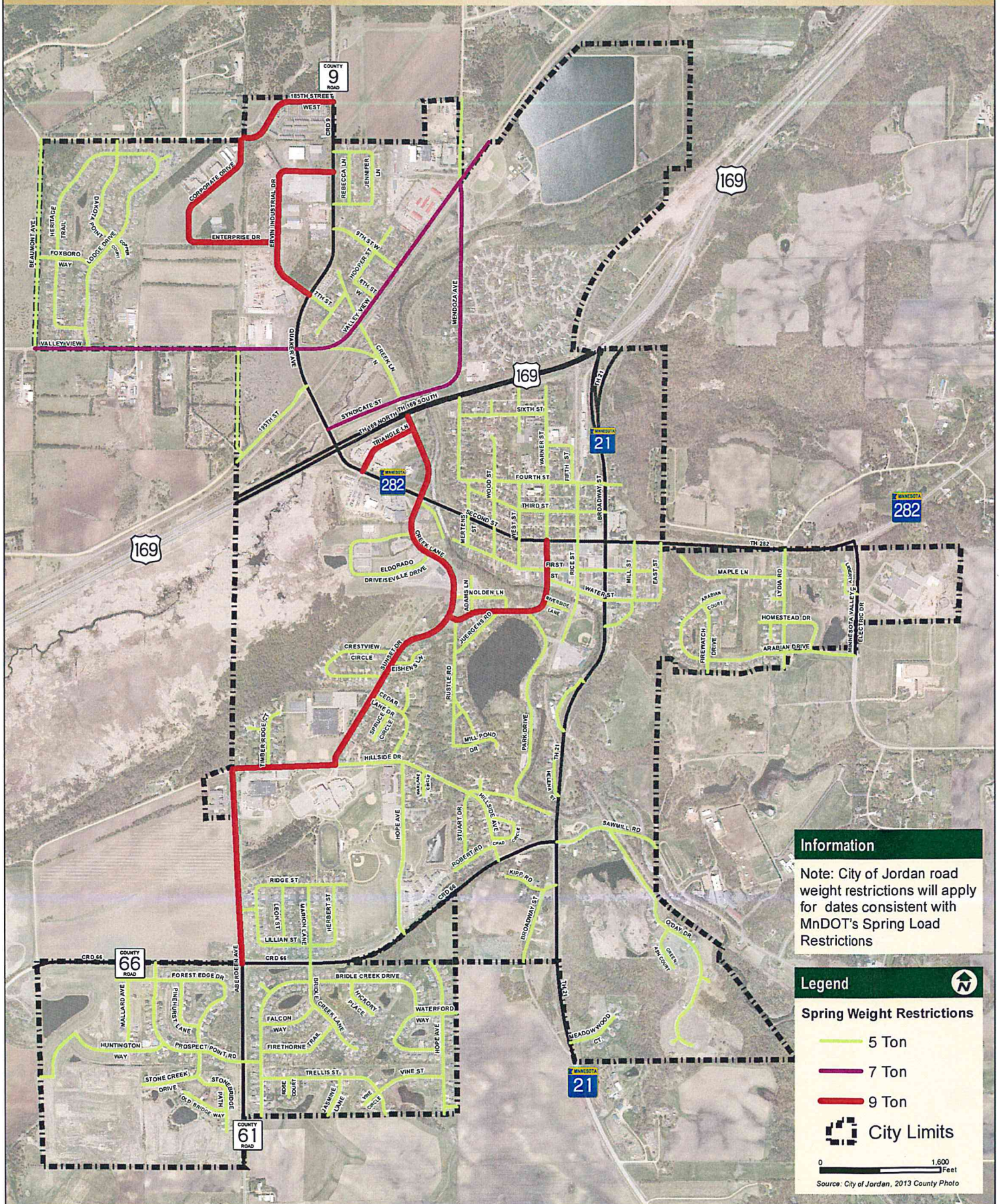




# Spring Weight Restrictions

City of Jordan

Effective Spring 2020



**Information**

Note: City of Jordan road weight restrictions will apply for dates consistent with MnDOT's Spring Load Restrictions

**Legend**

- 5 Ton
- 7 Ton
- 9 Ton
- City Limits

0 1,600 Feet

Source: City of Jordan, 2013 County Photo