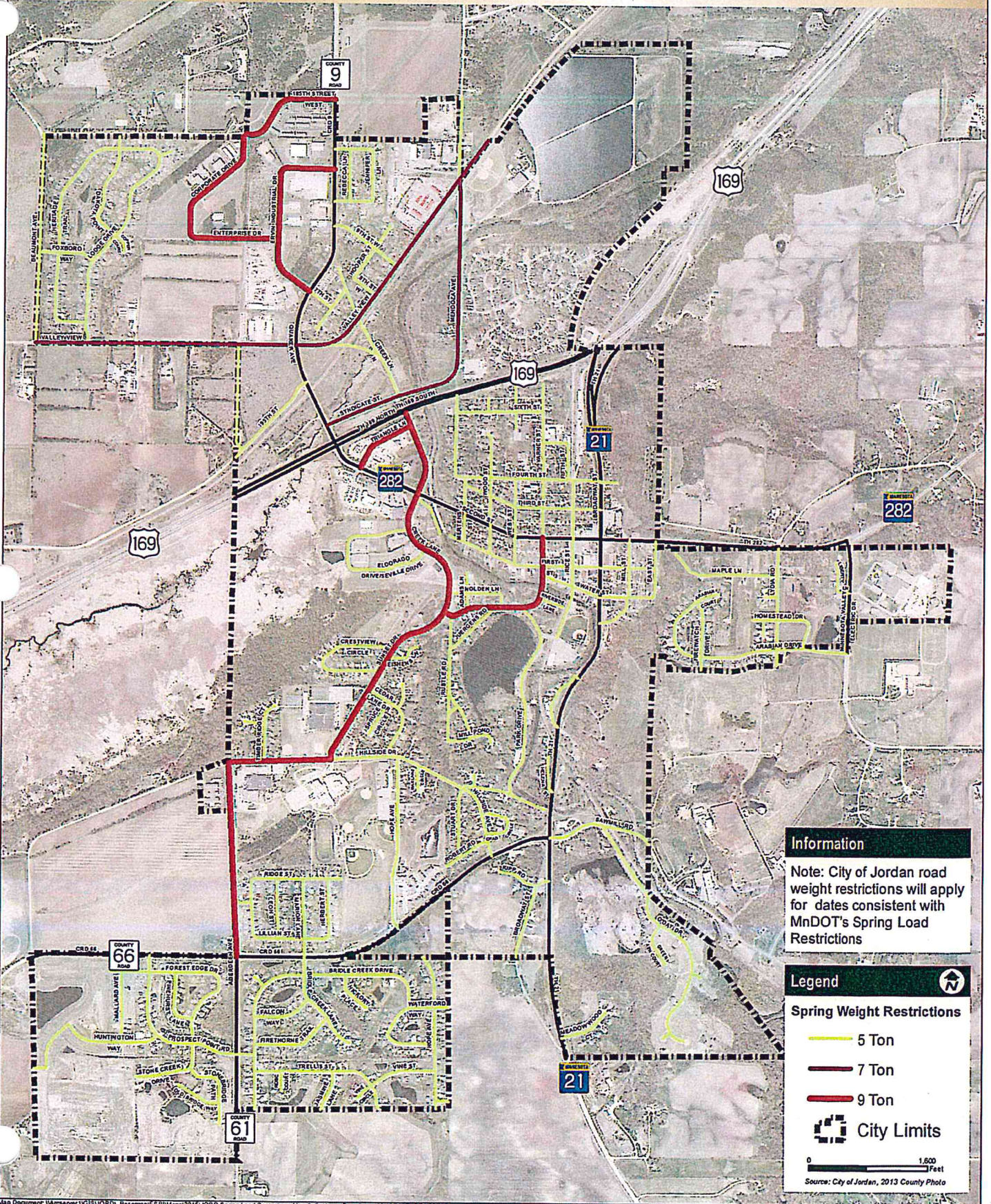




# Spring Weight Restrictions

City of Jordan

February 2015



**Information**

Note: City of Jordan road weight restrictions will apply for dates consistent with MnDOT's Spring Load Restrictions

**Legend**

**Spring Weight Restrictions**

- 5 Ton
- 7 Ton
- 9 Ton

City Limits

0 1,600 Feet

Source: City of Jordan, 2013 County Photo