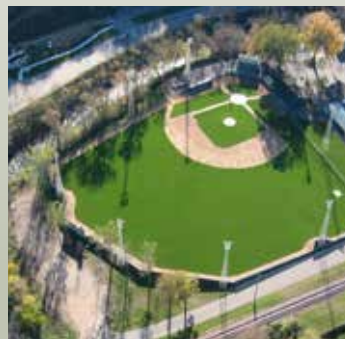


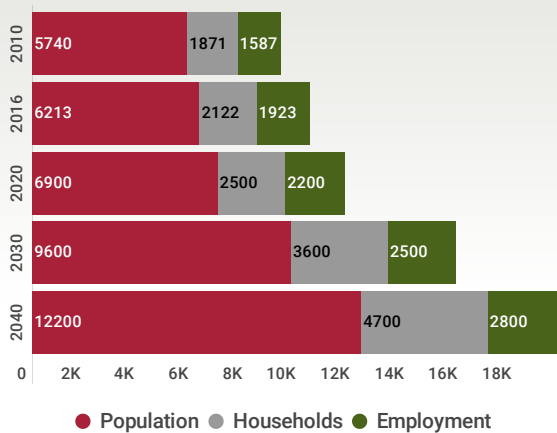
*Warm country feeling,
minutes from the cities*



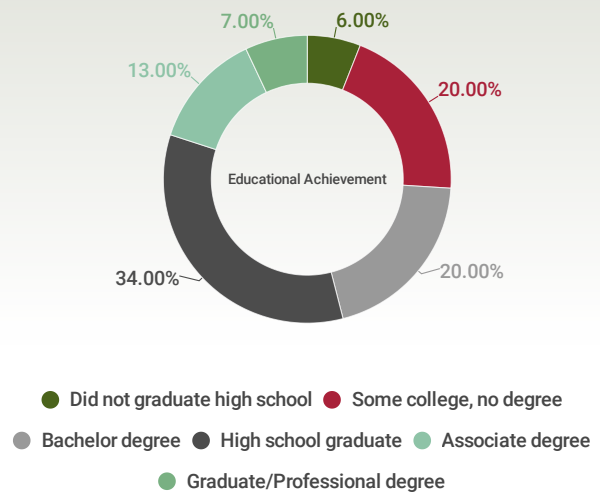
Jordan in a Snapshot

Jordan is located in Scott County, which was the fastest-growing county in Minnesota and one of the fastest-growing counties in the United States during the 2000s and 2010s. From 2010 to 2015, the County population increased by 9 percent. In 2016, the County's estimated population was 142,436.

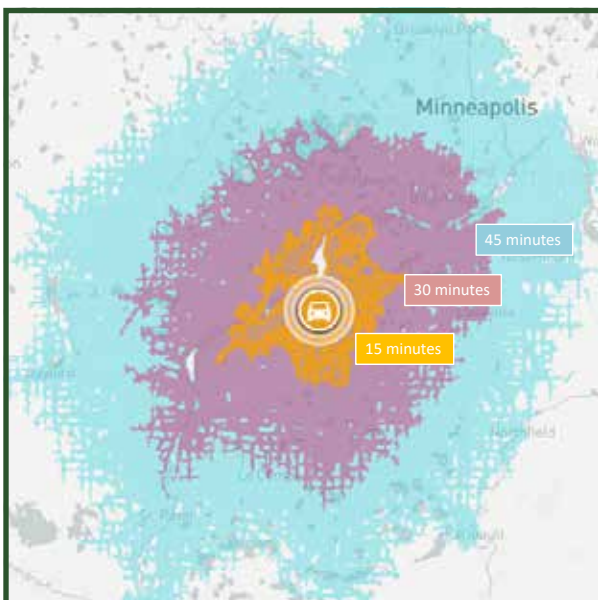
Population, Household and Employment Projections



Educational Achievement



Proximity to Twin Cities



Median home value:
204,100



Median household income:
66,200



Jordan Public Schools (ISD 717) has a ratio of 1 teacher to every
14.7 students



134 Acres of park, recreational & preserve land

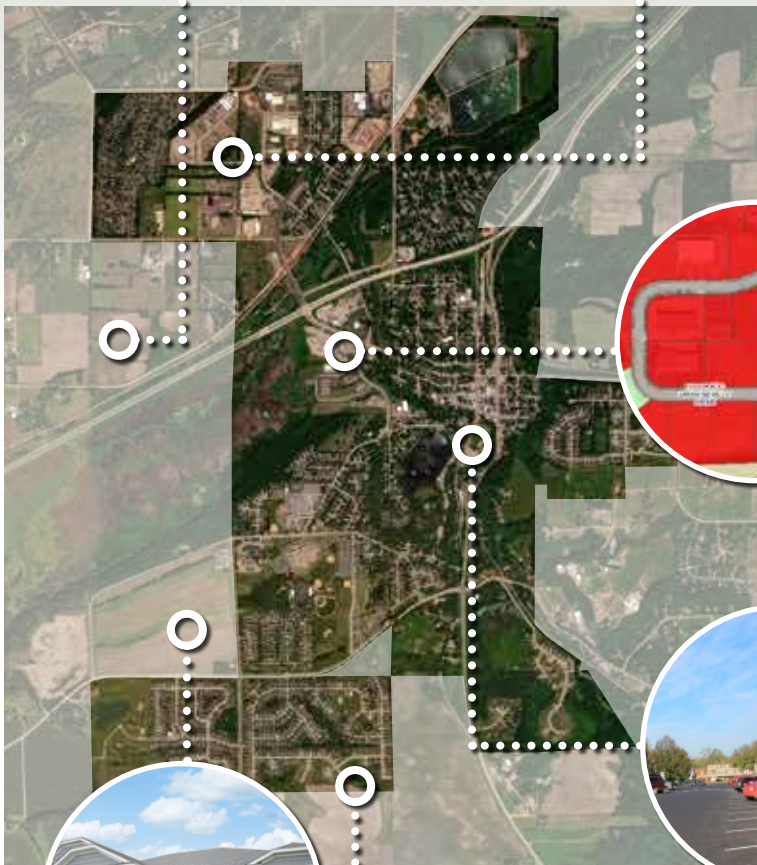
Development Opportunities



Highway commercial and industrial development opportunities with excellent access to Highway 169



Approximately 200 acres of developable industrial land is available and served by sewer and water



Highway commercial lots are available and allow for a mix of office, retail and service businesses



Jordan has a thriving and walkable downtown with a vibrant mix of businesses. Several sites are prime for redevelopment for commercial, high-density residential, or mixed use



Opportunities for new single family and townhome development exist south and west of the city limits

Development Assistance

The City of Jordan has programs in place to promote economic development, including:

- Tax Abatement
- Tax Increment Financing
- Jobs for Fees Program
- Façade Improvement Program (Downtown Matching Grant)
- Building Code Improvement Grant
- Commercial Kitchen Revolving Loan Program

Helpful Links

- Jordan Economic Development
 - Jordanmn.gov/city-departments/economic-development/
- Minnesota Department of Employment and Economic Development (MN DEED)
 - Mn.gov/deed/
- Scott County First Stop Shop
 - Scottfss.org
- Greater MSP
 - Greatermsp.org
- Small Business Administration
 - sba.gov

City staff are eager to assist you with your next development project in Jordan.

Please contact us so we may help!

Tom Nikunen, City Administrator

ph: 952-492-7934

email: TNikunen@jordanmn.gov

Addison Lewis, Planner/Economic Development Specialist

ph: 952-492 7929

email: alewis@jordanmn.gov

