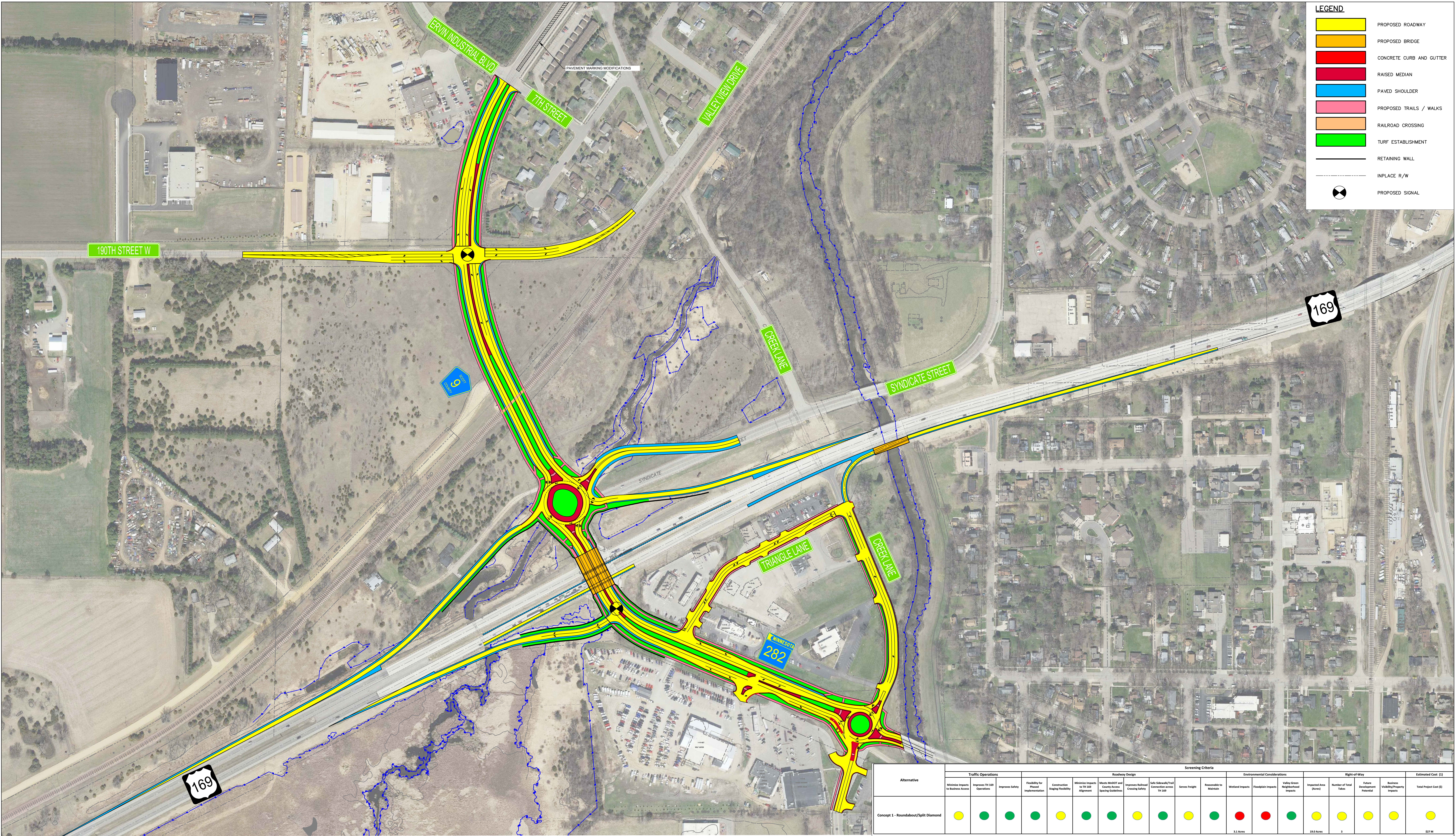


K:\TWC\_Civil\City of Jordan\TH 169\_2nd St Interchange\CAD\Plan Sheets\Layouts\Layout\_1.dwg, October 22, 2018 - 1:44pm



Alternative	Screening Criteria																		
	Traffic Operations			Roadway Design							Environmental Considerations			Right-of-Way				Estimated Cost (\$)	
	Minimize Impacts to Business Access	Improves TH 169 Operations	Improves Safety	Flexibility for Phased Implementation	Construction Staging Feasibility	Minimize Impacts to TH 169 Alignment	Meets MnDOT and County Access Spacing Guidelines	Improves Railroad Crossing Safety	Safe Sidewalk/Trail Connection across TH 169	Serves Freight	Reasonable to Maintain	Wetland Impacts	Floodplain Impacts	Valley Green Neighborhood Impacts	Impacted Area (Acres)	Number of Total Takes	Future Development Potential	Business Viability/Property Impacts	Total Project Cost (\$)
Concept 1 - Roundabout/Split Diamond	●	●	●	●	●	●	●	●	●	●	●	●	●	●	3.1 Acres	3	●	●	527 M