

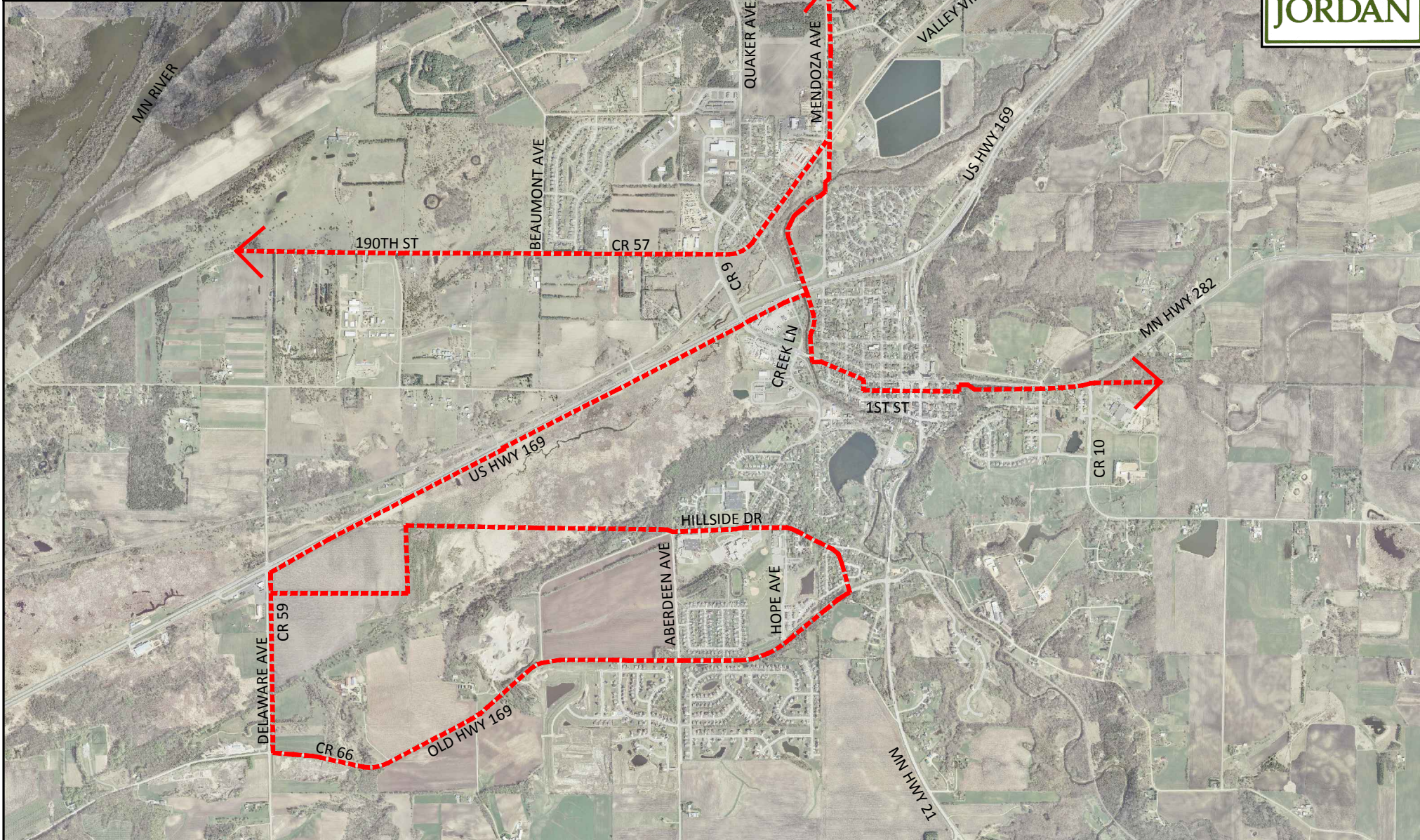


CITY OF JORDAN SNOWMOBILE TRAILS

JANUARY, 2014

LEGEND

SNOWMOBILE TRAILS



City of Jordan

Snowmobile Regulations

- 1. Speed limit city wide – 10 MPH**
- 2. Operation prohibited city wide from 11:00 p.m. until 7:00 a.m.**
- 3. Operation is prohibited on all sidewalks and boulevards.**
- 4. Operation is prohibited on private property (unless permission from the owner is given).**
- 5. Operation on city streets is only allowed by residents who are traveling from their residence to the nearest designated city trail. The operator must then take the most direct route from the city trail system to city limits, state or county trail. (It is incumbent upon the operator to know what streets are designated as trails within the city. Route maps may be obtained at City Hall)**
- 6. Persons 14 or 15 years of age must be accompanied by a parent or guardian. Operation by a person under the age of 13 is prohibited in city limits.**
- 7. Operators born after December 31, 1979 must have in their possession a valid snowmobile safety certificate issued by the State of Minnesota.**
- 8. Operation is prohibited on any lands owned by a public body or on frozen waters, including, but not limited to: school grounds, park property, playgrounds, recreational areas, private roads, platted but unimproved roads, utility easements, public trails and golf courses.**
- 9. An operator may not operate a snowmobile in a manner so as to create a loud, unnecessary or unusual noise which disturbs, annoys or interferes with the peace and quiet of other persons.**
- 10. Operators must make a complete stop at all uncontrolled intersections and yield the right-of-way to pedestrians and automobile traffic.**